

ISO9001 Registered



EHC
www.ehcknobs.com

Beyond control knobs . . . Components and assemblies within your reach.

ISO 9001
certified



NEW

*expanded
product line*

Instrument and Push-on Knobs

Control Knobs index



MS91528 SERIES KNOBS [PAGES 2 through 4](#)



MS91528 SERIES CONCENTRIC KNOBS [PAGE 4](#)



MS91528 TACTILE-SHAPED TOPS [PAGE 5](#)



CONTEMPORARY SERIES KNOBS [PAGES 6 and 7](#)



REGENT SERIES KNOBS [PAGES 8 and 9](#)



DESIGNER SERIES KNOBS [PAGE 10](#)



INDUSTRIAL SERIES KNOBS [PAGE 11](#)



TRADITIONAL SERIES KNOBS [PAGE 12](#)



3000 SERIES KNOBS [PAGE 13](#)



ELECTROMED SERIES KNOBS [PAGE 14](#)



CORONADO SERIES KNOBS PAGE 15



SOFT TOUCH SERIES KNOBS PAGE 16



MACHINED ALUMINUM KNOBS PAGE 18



CUSTOM KNOBS PAGES 19 through 21



Consumer Push-On Knobs

CONSUMER PUSH-ON KNOBS INDEX PAGES 22 and 23

DETAILED INDEX OF THE ITEMS LISTED BELOW

CUSTOMIZING OPTIONS PAGES 24 through 25

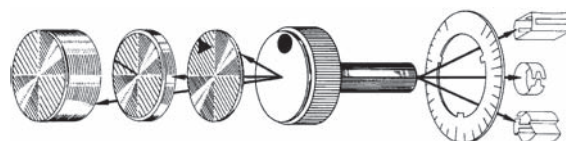
PUSH-ON STYLES	PAGES 26 through 35	
	PAGE 26	KC AUDIO KNOBS & CAPS
	PAGES 27 through 30	ROUND KNOBS
	PAGE 31	DIAL KNOBS
	PAGE 32	POINTER KNOBS
	PAGE 33	BAR KNOBS
	PAGE 34	FLUTED KNOBS
	PAGE 34	BUTTONS & SLIDERS
	PAGE 35	OVEN & GRILL KNOBS
	PAGE 35	BUMPERS

PUSH-ON SERIES	PAGES 38 through 42	
	PAGE 38	MS SERIES
	PAGE 38	DESIGNER SERIES
	PAGE 39	RS SERIES
	PAGE 40	CS SERIES
	PAGE 40	3000 SERIES
	PAGE 41	TRADITIONAL SERIES
	PAGE 41	CORONADO SERIES
	PAGE 41	GEMINI SERIES

SPECIAL KNOBS PAGE 42

TECHNICAL DATA PAGE 43

MECHANICAL TOLERANCES PAGE 44

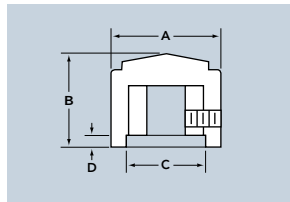


We can make exactly what you need.

SEE OUR GUIDE TO CUSTOMIZING OPTIONS (PAGES 24 through 25)



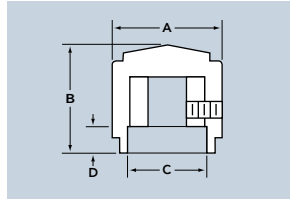
ROUND



Part Number		NUT CLEARANCE				TO COMPLETE PART NUMBER			
MS91528 Plain Top	White Dot	A Diam.	B Height	C Diam.	D Depth	Style	Shaft Hole	Color	Suffix
0N	0C	.500	.510	.435	.026	N	1	B	-
1N	1C	.700	.610	.485	.026	C	2	S	
2N	2C	.900	.790	.640	.114		3	G	
3N	3C	1.250	.700	.750	.114		4	J	
4N	4C	1.750	.850	.750	.114				
5N	5C	2.250	.875	.750	.114				



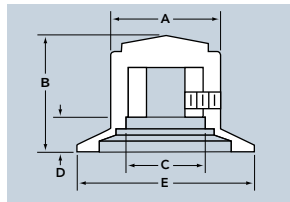
SKIRTED ROUND



Part Number		NUT CLEARANCE				TO COMPLETE PART NUMBER			
MS91528 Plain Top	White Dot	A Diam.	B Height	C Diam.	D Depth	Style	Shaft Hole	Color	Suffix
0D	0E	.500	.655	.300	.177	D	1	B	-
1D	1E	.700	.782	.485	.188	E	2	S	
2D	2E	.900	1.010	.640	.320		3	G	
3D	3E	1.250	.850	.750	.250		4	J	
4D	4E	1.750	1.070	.750	.320				
5D	5E	2.250	1.095	.750	.320				



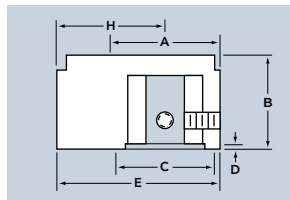
DIAL



Part Number		NUT CLEARANCE					TO COMPLETE PART NUMBER			
MS91528 with Arrow	Plain Dial	A Diam.	B Height	C Diam.	D Depth	E Width	Style	Shaft Hole	Color	Suffix
0F	0G	.500	.655	.300	.177	.900	F	1	B	-
1F	1G	.700	.782	.485	.188	1.150	G	2	S	
2F	2G	.900	1.010	.640	.320	1.500		3	G	
3F	3G	1.250	.850	.750	.250	1.837		4	J	
4F	4G	1.750	1.070	.750	.320	2.468				
5F	5G	2.250	1.095	.750	.320	3.020				



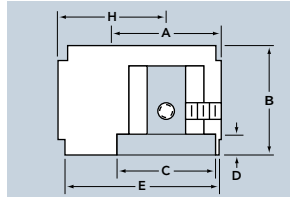
POINTER



Part Number		NUT CLEARANCE					TO COMPLETE PART NUMBER				
MS91528		A Diam.	B Height	C Diam.	D Depth	E Length	H Swing	Style	Shaft Hole	Color	Suffix
0P		.500	.510	.420	.026	.740	.490	P	1	B	-
1P		.700	.610	.485	.026	1.030	.680		2	S	
2P		.900	.790	.640	.114	1.335	.885		3	G	
									4	J	



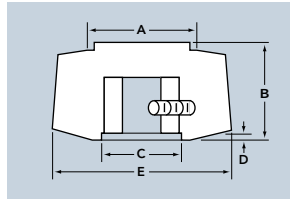
SKIRTED POINTER



Part Number		NUT CLEARANCE					TO COMPLETE PART NUMBER				
MS91528		A Diam.	B Height	C Diam.	D Depth	E Length	H Swing	Style	Shaft Hole	Color	Suffix
0K		.500	.655	.300	.177	.740	.490	K	1	B	-
1K		.700	.782	.485	.188	1.030	.680		2	S	
2K		.900	1.010	.640	.320	1.335	.885		3	G	
									4	J	



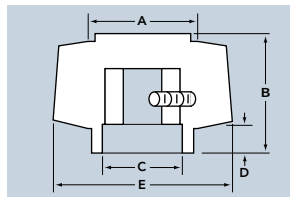
DOUBLE BAR



Part Number		NUT CLEARANCE				TO COMPLETE PART NUMBER				
MS91528		A Diam.	B Height	C Diam.	D Depth	E Width	Style	Shaft Hole	Color	Suffix
1GG		.700	.610	.485	.026	1.150	GG	1	B	-
								2	G	
								3		
								4		



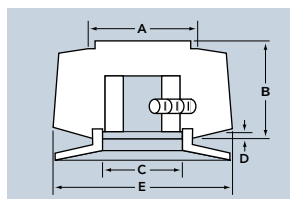
SKIRTED DOUBLE BAR



Part Number		NUT CLEARANCE				TO COMPLETE PART NUMBER				
MS91528		A Diam.	B Height	C Diam.	D Depth	E Width	Style	Shaft Hole	Color	Suffix
1HH		.700	.782	.485	.188	1.150	HH	1	B	-
								2	G	
								3		
								4		



DOUBLE BAR W/DIAL

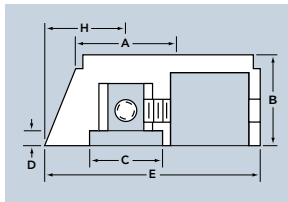


Part Number		NUT CLEARANCE				TO COMPLETE PART NUMBER				
MS91528		A Diam.	B Height	C Diam.	D Depth	E Width	Style	Shaft Hole	Color	Suffix
1II		.700	.782	.485	.188	1.150	II	1	B	-
								2	G	
								3		
								4		

REFER TO ORDERING GUIDE ON PAGE 5 FOR STYLE, SHAFT HOLE SPECIFICATIONS AND COLORS.



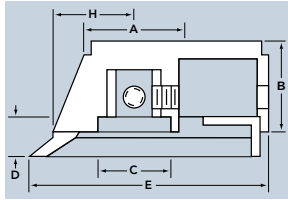
BAR



Part Number			NUT CLEARANCE				TO COMPLETE PART NUMBER			
	A Diam.	B Height	C Diam.	D Depth	E Length	H Swing	Style	Shaft Hole	Color	Suffix
MS91528							A	2	B	-
1A__	.700	.645	.515	.110	1.515	.575		4	S	
								G	J	



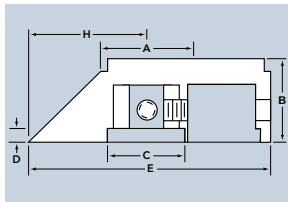
BAR W/DIAL



Part Number			NUT CLEARANCE				TO COMPLETE PART NUMBER			
	A Diam.	B Height	C Diam.	D Depth	E Length	H Swing	Style	Shaft Hole	Color	Suffix
MS91528							B	2	B	-
1B__	.700	.815	.515	.266	1.720	.780		4	S	
								G	J	



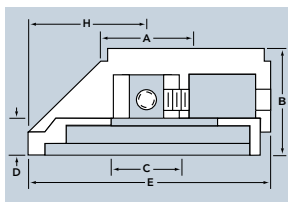
ANTI-PARALLAX BAR



Part Number			NUT CLEARANCE				TO COMPLETE PART NUMBER			
	A Diam.	B Height	C Diam.	D Depth	E Length	H Swing	Style	Shaft Hole	Color	Suffix
MS91528							L	2	B	-
2L__	.700	.645	.595	.110	1.855	.900		4	S	
								G	J	



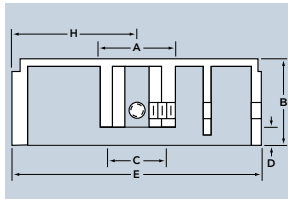
ANTI-PARALLAX BAR W/DIAL



Part Number			NUT CLEARANCE				TO COMPLETE PART NUMBER			
	A Diam.	B Height	C Diam.	D Depth	E Length	H Swing	Style	Shaft Hole	Color	Suffix
MS91528							M	2	B	-
2M__	.700	.815	.470	.266	1.870	.915		4	S	
								G	J	



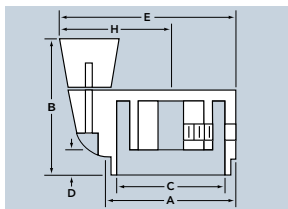
LONG BAR



Part Number			NUT CLEARANCE				TO COMPLETE PART NUMBER			
	A Diam.	B Height	C Diam.	D Depth	E Length	H Swing	Style	Shaft Hole	Color	Suffix
MS91528							R	2	B	-
3R__	.788	.869	.562	.177	2.552	1.290		4	S	
								G	J	



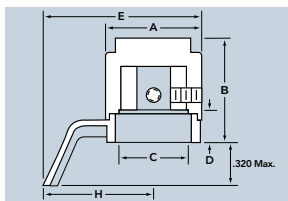
SPINNER



Part Number			NUT CLEARANCE				TO COMPLETE PART NUMBER			
	A Diam.	B Height	C Diam.	D Depth	E Width	H Swing	Style	Shaft Hole	Color	Suffix
MS91528							S	2	B	-
3S__	1.250	1.350	.685	.250	1.715	1.090		4	S	
4S__	1.750	1.758	.685	.320	2.359	1.484			G	
5S__	2.250	1.782	.685	.320	2.859	1.734			J	



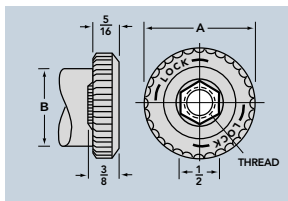
KNOB LOCK POINTER



Part Number			NUT CLEARANCE				TO COMPLETE PART NUMBER			
	A Diam.	B Height	C Diam.	D Depth	E Width	H Swing	Style	Shaft Hole	Color	Suffix
MS91528							AA	1	B	-
1AA__	.700	.782	.560	.188	1.162	.812		2	S	
2AA__	.900	.958	.640	.188	1.418	.968		3	G	
3AA__	1.250	.862	.750	.188	1.750	1.125		4	J	



KNOB LOCK



Part Number			TO COMPLETE PART NUMBER				
	Splash Proof	A Diam.	B* Diam.	Style	Shaft Hole	Color	Suffix
MS91528				CC	1	B	-
1CC__	1DD__	1.030	.721	DD	2	S	
2CC__	2DD__	1.340	.928			G	
3CC__	3DD__	2.250	1.269			J	

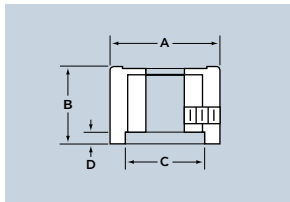
THREAD SIZE: 1— 1/4—32
2— 3/8—32
*Maximum knob diameter with which a knob lock will function as a lock.

See our mechanical section on page 66 for details on our (KS series) locking mechanism.

MILITARY SERIES



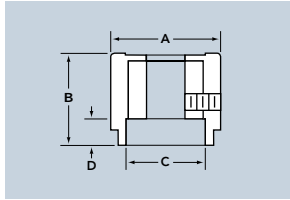
CONCENTRIC ROUND



Part Number		NUT CLEARANCE		TO COMPLETE PART NUMBER				
MS91528	A Diam.	B Height	C Diam.	D Depth	Style	Shaft Hole	Color	Suffix
1N__C	.700	.510	.485	.026	N	2	B	C
2N__C	.900	.655	.640	.114		4	S	
3N__C	1.250	.530	.750	.114			G J	



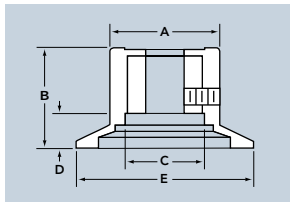
CONCENTRIC SKIRTED ROUND



Part Number		NUT CLEARANCE		TO COMPLETE PART NUMBER				
MS91528	A Diam.	B Height	C Diam.	D Depth	Style	Shaft Hole	Color	Suffix
1D__C	.700	.690	.485	.188	D	2	B	C
2D__C	.900	.885	.640	.320		4	S	
3D__C	1.250	.700	.750	.250			G J	



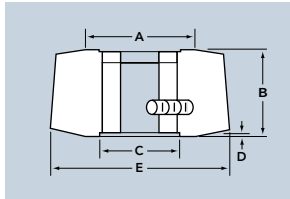
CONCENTRIC DIAL



Part Number		NUT CLEARANCE		TO COMPLETE PART NUMBER						
With Arrow	MS91528 Plain Dial	A Diam.	B Height	C Diam.	D Depth	E Width	Style	Shaft Hole	Color	Suffix
1G__C	1F__C	.700	.690	.485	.188	1.150	G	2	B	C
2G__C	2F__C	.900	.885	.640	.320	1.500	F	4	S	
3G__C	3F__C	1.250	.700	.750	.250	1.837			G J	



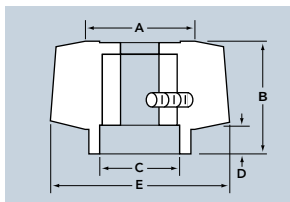
CONCENTRIC DOUBLE BAR



Part Number		NUT CLEARANCE		TO COMPLETE PART NUMBER					
MS91528	A Diam.	B Height	C Diam.	D Depth	E Width	Style	Shaft Hole	Color	Suffix
1GG__C	.700	.510	.485	.026	1.150	GG	2 4	B S G J	C



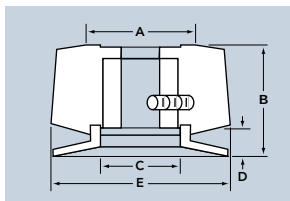
CONCENTRIC SKIRTED DOUBLE BAR



Part Number		NUT CLEARANCE		TO COMPLETE PART NUMBER					
MS91528	A Diam.	B Height	C Diam.	D Depth	E Width	Style	Shaft Hole	Color	Suffix
1HH__C	.700	.690	.485	.188	1.150	HH	2 4	B S G J	C



CONCENTRIC DOUBLE BAR W/DIAL



Part Number		NUT CLEARANCE		TO COMPLETE PART NUMBER					
MS91528	A Diam.	B Height	C Diam.	D Depth	E Width	Style	Shaft Hole	Color	Suffix
1II__C	.700	.690	.485	.188	1.150	II	2 4	B S G J	C

REFER TO ORDERING GUIDE ON PAGE 5 FOR STYLE, SHAFT HOLE SPECIFICATIONS AND COLORS.

KNOB LOCKS

See our mechanical section on page 66 for details on our (KL series) locking mechanism.



STYLE KL701
.70 DIAM. KNOB



STYLE KL901
.90 DIAM. KNOB



STYLE KL1251
1.25 DIAM. KNOB



STYLE KL701
.70 DIAMETER
KNOB LOCK
POINTER



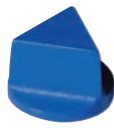
STYLE KL901
.90 DIAMETER
KNOB LOCK
POINTER



STYLE KL1251
1.25 DIAMETER
KNOB LOCK
POINTER



TACTILE SHAPES These tactile-shaped and colored tops can be combined with all knob styles except bar pointer. Available in Black or Gray with colored top; Matte finish.



FORM 1
INTENSITY
BLUE



FORM 2
TUNE
ORANGE



FORM 3
DIMMER
WHITE



FORM 4
GAIN
RED



FORM 5
FOCUS
VIOLET



FORM 6
RANGE
YELLOW



FORM 7
RANGE
YELLOW

Standard Tactile Cap	Diameter	Round	Skirted Round	Dial	Pointer	Skirted Pointer
FORM 1 Intensity-Blue	70	1N__1	1D__1	1F__1	-	-
	90	2N__1	2D__1	2F__1	-	-
	125	3N__1	3D__1	3F__1	-	-
FORM 2 Tune-Orange	70	1N__2	1D__2	1F__2	-	-
	90	2N__2	2D__2	2F__2	-	-
	125	3N__2	3D__2	3F__2	-	-
FORM 3 Dimmer-White	70	1N__3	1D__3	1F__3	-	-
	90	2N__3	2D__3	2F__3	-	-
	125	3N__3	3D__3	3F__3	-	-
FORM 4 Gain-Red	70	1N__4	1D__4	1F__4	-	-
	90	2N__4	2D__4	2F__4	-	-
	125	3N__4	3D__4	3F__4	-	-
FORM 5 Focus-Violet	70	1N__5	1D__5	1F__5	-	-
	90	2N__5	2D__5	2F__5	-	-
	125	3N__5	3D__5	3F__5	-	-
FORM 6 (ROUND) Range-Yellow	70	1N__6	1D__6	1F__6	-	-
	90	2N__6	2D__6	2F__6	-	-
	125	3N__6	3D__6	3F__6	-	-
FORM 7 (POINTER) Range-Yellow	70	-	-	-	1P__7	1K__7
	90	-	-	-	2P__7	2K__7

SPINNER HANDLES



FORM 8
MARKER
GREEN



FORM 9
BEARING
GRAY

Standard Tactile Cap	Series	Crank
FORM 8 Marker-Green	125	3S__8
	175	4S__8
	225	5S__8
FORM 9 Bearing-Gray	125	3S__9
	175	4S__9
	225	5S__9

ORDERING GUIDE FOR MILITARY SERIES

Cap Design	Diam.	Style		Shaft Hole	Color	Suffix
Indicate Part No. from Tables Above	0 = .500 1 = .700 2 = .900 3 = 1.250 4 = 1.750 5 = 2.250	N - Round D - Skirted Round F - Dial P - Pointer K - Skirted Ptr. w/Dial GG - Dbl. Bar HH - Skt. Dbl. Bar II - Skt. Dbl. Bar w/Dial	A - Bar B - Bar w/Dial L - Anti-Parallax Bar M - Anti-Parallax Bar w/Dial R - Long Bar S - Spinner	1 - 1/8" Round 2 - 1/4" Round 3 - 1/2" "D" Hole 4 - 3/4" "D" Hole 5 - .190 Round 6 - .267 Round	B - Matte Black G - Gloss Black S - Matte Gray J - Gloss Gray	C = Concentric Tactiles: 1 - Blue 2 - Orange 3 - White 4 - Red 5 - Violet 6 - Yellow 7 - Yellow 8 - Green 9 - Grey

SET SCREW SPECIFICATIONS

Each Knob Furnished with (2) Set Screws

Series	Shaft Hole	
	1/8" Shaft Hole	1/4" Shaft Hole
0	4-40 UNC-3A	4-40 UNC-3A
1	4-40 UNC-3A	4-40 UNC-3A
2	4-40 UNC-3A	8-32 UNC-3A
3		8-32 UNC-3A
4		8-32 UNC-3A

TOLERANCES

A	B	C	D	E
+.030	±.030	Min.	Min.	Max.

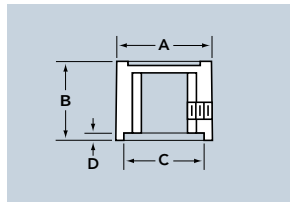
EXAMPLE: MS91528-1N2B2

	Diameter	Style	Shaft Hole	Color	Suffix
	.700	Round	.250"	Matte Black	Tactile Top
91528-	1	N	2	B	2

CONTEMPORARY SERIES



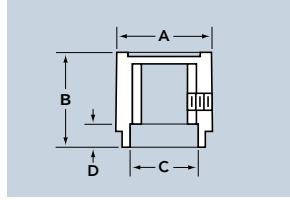
ROUND



Part Number		NUT CLEARANCE		TO COMPLETE PART NUMBER				
Without Indicator	With Indicator	A Diam.	B Height	C Diam.	D Depth	Style	Shaft Hole	Color
5N	5C	.500	.430	.435	.026	N	1	S
7N	7C	.700	.532	.485	.026	C	2	B
9N	9C	.900	.731	.640	.114		3	J
12N	12C	1.250	.600	.750	.114		4	G



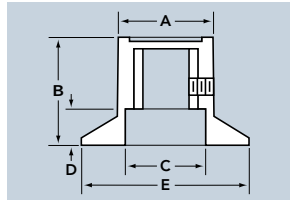
SKIRTED ROUND



Part Number		NUT CLEARANCE		TO COMPLETE PART NUMBER				
Without Indicator	With Indicator	A Diam.	B Height	C Diam.	D Depth	Style	Shaft Hole	Color
5D	5E	.500	.585	.300	.026	D	1	S
7D	7E	.700	.682	.485	.026	E	2	B
9D	9E	.900	.935	.640	.114		3	J
12D	12E	1.250	.750	.750	.114		4	G



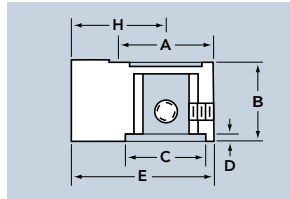
DIAL



Part Number		NUT CLEARANCE			TO COMPLETE PART NUMBER				
Without Arrow	With Arrow	A Diam.	B Height	C Diam.	D Depth	E Dial Diam.	Style	Shaft Hole	Color
5G	5F	.500	.585	.300	.177	.900	G	1	S
7G	7F	.700	.682	.485	.188	1.150	F	2	B
9G	9F	.900	.935	.640	.320	1.500		3	J
12G	12F	1.250	.750	.750	.250	1.837		4	G



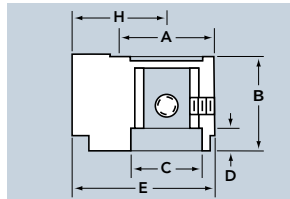
POINTER



Part Number		NUT CLEARANCE		TO COMPLETE PART NUMBER					
	A Diam.	B Height	C Diam.	D Depth	E Length	H Swing	Style	Shaft Hole	Color
5P	.500	.430	.435	.026	-	.490	P	1	S
7P	.700	.532	.485	.026	-	.680		2	B
9P	.900	.731	.640	.114	-	.885		3	J
								4	G



SKIRTED POINTER



Part Number		NUT CLEARANCE		TO COMPLETE PART NUMBER					
	A Diam.	B Height	C Diam.	D Depth	E Length	H Swing	Style	Shaft Hole	Color
5K	.500	.585	.300	.177	-	.490	K	1	S
7K	.700	.682	.485	.188	-	.680		2	B
9K	.900	.935	.640	.320	-	.885		3	J
								4	G

TOLERANCES

A	B	C	D	E	H
+ .030	± .030	Min.	Min.	Max.	Max.
- .010					

CONCENTRIC CONFIGURATIONS

Available Contemporary concentric configurations. Available in Black or Gray; with Matte or without finish.

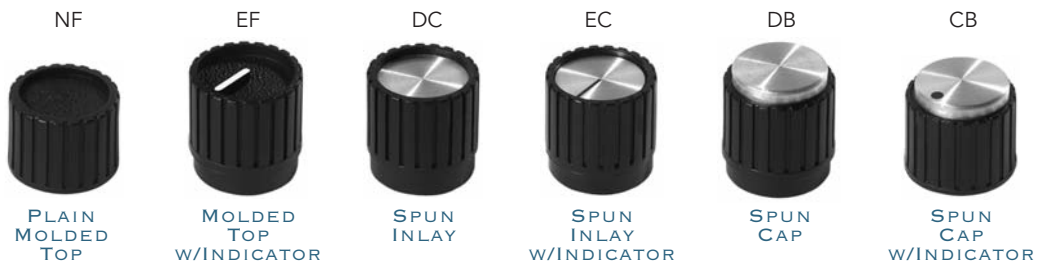


Size	Reference Height	Reference Height	Reference Height	Reference Height	Reference Height
5/7	.940	1.120	1.120	.940	1.120
7/9	1.165	1.395	1.395	1.165	1.395
9/12	1.185	1.355	1.355	1.185	1.355



ALTERNATE CAP STYLES

Contemporary series provides the designer with a varied number of elegant styles of tops for this popular series.



Alternate Cap Styles: (Second and third digit of Part Number)

	Plain Molded Top	Molded Top w/Indicator	Spun Inlay	Spun Inlay w/Indicator	Spun Cap	Spun Cap w/Indicator
Round	NF	CF	NC	CC	NB	CB
Skirted Round	DF	EF	DC	EC	DB	EB
Dial with Arrow	FF	-	FC	-	FB	-
Pointer	PF	-	PC	-	PB	-
Skirted Pointer	KF	-	KC	-	KB	-

For Knobs with Raised Caps:

with a .500 Diam. add .070 to the "B" dimension
 with a .700 Diam. add .100 to the "B" dimension
 with a .900 Diam. add .115 to the "B" dimension
 with a 1.250 Diam. add .100 to the "B" dimension

ORDERING GUIDE FOR CONTEMPORARY SERIES

Diameter	Plain or w/Indicator	Cap Style	Shaft Hole	Color	Set Screw
5= .500	N- Plain Round	F- Molded	1- 1/8" Round	S- Black	1=1 Socket
7= .700	C- Round w/Indicator	C- Inlay	2- 1/4" Round	B- Black Matte	2=2 Socket
9= .900	D- Skirted Round	B- Cap	3- 3/8" "D" Hole	J- Gray	3=1 Slotted
12=1.250	E- Skirted w/Indicator		4- 1/2" "D" Hole	G- Gray Matte	4=2 Slotted
	M- Metal Dial w/Arrow*		5- .190" Round		
	H- Plain Metal Dial		6- .267" Round		
	F- Plastic Dial w/Arrow				
	G- Plain Plastic Dial				
	P- Pointers				
	K- Skirted Pointers				

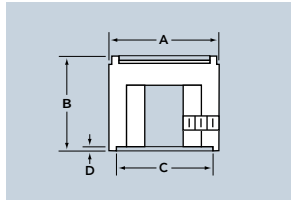
*With metal dial, nut clearance depth D=.090 min.

	Diameter	Plain or w/Ind.	Cap Style	Shaft Hole	Color	Set Screw
EXAMPLE:	.500	Rnd. w/Indicator	Inlay	.125"	Mirror Black	2 Socket
5CC1S2	5	C	C	1	S	2

NOTE: For concentric parts, add "C" prefix onto part number. Example: C5CC1S2
 Available with plain molded tops only.



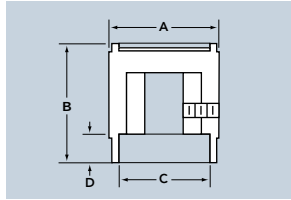
ROUND



Part Number		NUT CLEARANCE		TO COMPLETE PART NUMBER				
Plain Spun Inlay	w/Indicator Line	A Diam.	B Height	C Diam.	D Depth	Style	Shaft Hole	Color
EH71-0N	-0C	.500	.510	.435	.026	N	1	B
EH71-1N	-1C	.700	.610	.485	.026	C	2	S
EH71-2N	-2C	.900	.790	.640	.114		3	G
EH71-3N	-3C	1.250	.700	.750	.114		4	J
EH71-4N	-4C	1.750	.850	.750	.114			



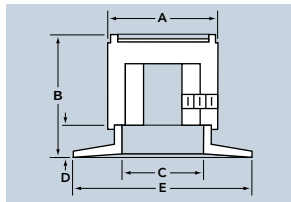
SKIRTED ROUND



Part Number		NUT CLEARANCE		TO COMPLETE PART NUMBER				
Plain Spun Inlay	w/Indicator Line	A Diam.	B Height	C Diam.	D Depth	Style	Shaft Hole	Color
EH71-0D	-0E	.500	.660	.360	.177	D	1	B
EH71-1D	-1E	.700	.780	.485	.188	E	2	S
EH71-2D	-2E	.900	1.010	.640	.320		3	G
EH71-3D	-3E	1.250	.850	.750	.250		4	J
EH71-4D	-4E	1.750	1.070	.750	.320			



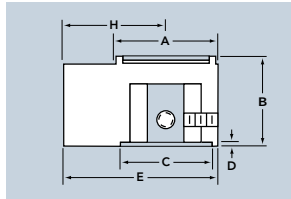
DIAL



Part Number		NUT CLEARANCE		TO COMPLETE PART NUMBER					
Dial w/Arrow	Plain Dial	A Diam.	B Height	C Diam.	D Depth	E Width	Style	Shaft Hole	Color
EH71-0F	-0G	.500	.660	.360	.177	.900	G	1	B
EH71-1F	-1G	.700	.780	.485	.188	1.150	F	2	S
EH71-2F	-2G	.900	1.010	.640	.320	1.500		3	G
EH71-3F	-3G	1.250	.850	.750	.250	1.837		4	J



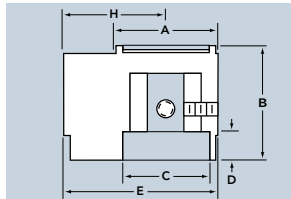
POINTER



Part Number		NUT CLEARANCE		TO COMPLETE PART NUMBER				
A Diam.	B Height	C Diam.	D Depth	E Width	H Swing	Style	Shaft Hole	Color
.500	.510	.435	.026	.740	.490	P	1	B
.700	.610	.485	.026	1.030	.680		2	S
.900	.790	.640	.114	1.335	.885		3	G
							4	J



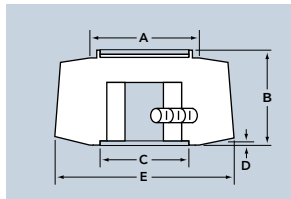
SKIRTED POINTER



Part Number		NUT CLEARANCE		TO COMPLETE PART NUMBER				
A Diam.	B Height	C Diam.	D Depth	E Width	H Swing	Style	Shaft Hole	Color
.500	.660	.360	.177	.740	.490	K	1	B
.700	.780	.485	.188	1.030	.680		2	S
.900	1.010	.640	.320	1.335	.885		3	G
							4	J



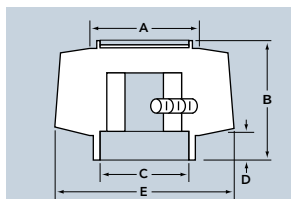
DOUBLE BAR



Part Number		NUT CLEARANCE		TO COMPLETE PART NUMBER				
A Diam.	B Height	C Diam.	D Depth	E Width		Style	Shaft Hole	Color
.700	.610	.485	.026	1.205		GG	1	B
.900	.630	.640	.114	1.500			2	S
							3	G
							4	J



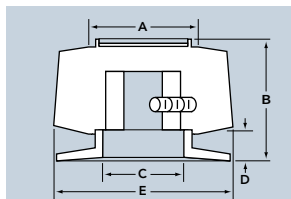
SKIRTED DOUBLE BAR



Part Number		NUT CLEARANCE		TO COMPLETE PART NUMBER				
A Diam.	B Height	C Diam.	D Depth	E Width		Style	Shaft Hole	Color
.700	.780	.485	.188	1.205		HH	1	B
.900	1.010	.640	.320	1.500			2	S
							3	G
							4	J



DOUBLE BAR W/DIAL

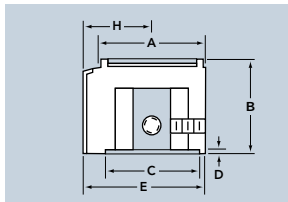


Part Number		NUT CLEARANCE		TO COMPLETE PART NUMBER				
A Diam.	B Height	C Diam.	D Depth	E Width		Style	Shaft Hole	Color
.700	.780	.485	.188	1.205		II	1	B
.900	1.010	.640	.320	1.500			2	S
							3	G
							4	J

REFER TO ORDERING GUIDE ON PAGE 9 FOR STYLE, SHAFT HOLE SPECIFICATIONS AND COLORS.



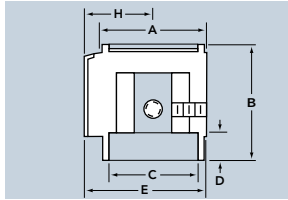
SINGLE BAR



Part Number	A		B		NUT CLEARANCE		TO COMPLETE PART NUMBER		
	Diam.	Height	C Diam.	D Depth	E Width	H Swing	Style	Shaft Hole	Color
EH71-0SB	.500	.510	.435	.026	.600	.350	SB	1	B
EH71-1SB	.700	.610	.485	.026	.810	.460		2	S
EH71-2SB	.900	.790	.640	.114	1.040	.590		3	G
								4	J



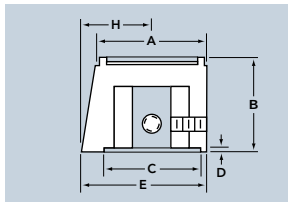
SKIRTED SINGLE BAR



Part Number	A		B		NUT CLEARANCE		TO COMPLETE PART NUMBER		
	Diam.	Height	C Diam.	D Depth	E Width	H Swing	Style	Shaft Hole	Color
EH71-0DSB	.500	.660	.360	.177	.600	.350	DSB	1	B
EH71-1DSB	.700	.780	.485	.188	.810	.460		2	S
EH71-2DSB	.900	1.010	.640	.320	1.040	.590		3	G
								4	J



ROUND W/ POINTER



Part Number	A		B		NUT CLEARANCE		TO COMPLETE PART NUMBER		
	Diam.	Height	C Diam.	D Depth	E Width	H Swing	Style	Shaft Hole	Color
EH71-0NP	.500	.510	.435	.026	.656	.406	NP	1	B
EH71-1NP	.700	.610	.485	.026	.856	.506		2	S
EH71-2NP	.900	.790	.640	.114	1.056	.606		3	G
EH71-3NP	1.250	.700	.750	.114	1.406	.781		4	J

ORDERING GUIDE FOR REGENT SERIES

Plain or w/Indicator	Style and Diameter	Shaft Hole	Color
N- Plain Round	Indicate Part Number from Tables Above	1- 1/8" Round	B- Black Matte S- Black G- Gray Matte J- Gray
C- Round w/Indicator		2- 1/4" Round	
D- Skirted Round		3- 3/8" "D" Hole	
E- Skirted w/Indicator		4- 1/2" "D" Hole	
F- Plastic Dial w/Arrow		5-.190 Round	
G- Plain Plastic Dial		6-.267 Round	
P- Pointer			
K- Skirted Pointer			
GG- Double Bar			
HH- Skirted Double Bar			
II- Double Bar w/Dial			
SB- Single Bar			
DSB- Skirted Single Bar			
NP- Round w/Pointer			

SET SCREW SPECIFICATIONS

Series	Diam. Size	Each Knob Furnished with (2) Set Screws	
		1/8" Shaft Hole	1/4" Shaft Hole
0	.500	4-40 UNC-3A	4-40 UNC-3A
1	.700	4-40 UNC-3A	4-40 UNC-3A
2	.900	4-40 UNC-3A	8-32 UNC-3A
3	1.250		8-32 UNC-3A
4	1.750		8-32 UNC-3A

All Regent Series knobs come with spun aluminum inlays as shown. By special order, knobs are available with printing on inlays, in other colors, or without inlays. See page 53 for Regent Series knob locks.

Series	Diameter	Style	Shaft Hole	Color
EXAMPLE: EH71-1D2S	.700	Skirted Round	.250"	Black as Molded
EH71-	1	D	2	S

NOTE: For concentric parts, add "C" prefix onto part number. Example: C5CC1S2 Available with plain molded tops only.

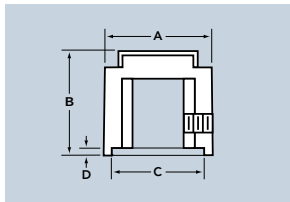
CONCENTRIC KNOBS W/INLAYS



Diam.	Reference Height	Reference Height	Reference Height	Reference Height	Reference Height
.700	1.100	1.250	1.260	1.100	1.270
.900	1.400	1.600	1.640	1.220	1.470



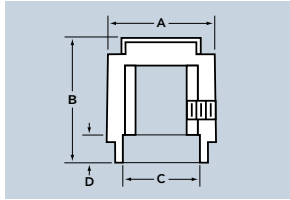
ROUND



Part Number		NUT CLEARANCE		TO COMPLETE PART NUMBER				
Plain Cap	w/Indicator Dot	A Diam.	B Height	C Diam.	D Depth	Style	Shaft Hole	Color
PC0N	DC0N	.505	.505	.435	.026	N	1	B
PC1N	DC1N	.700	.605	.485	.026		2	S
PC2N	DC2N	.900	.760	.640	.114		G	
PC3N	DC3N	1.250	.630	.750	.114		J	



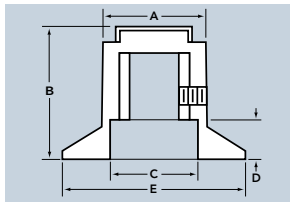
SKIRTED ROUND



Part Number		NUT CLEARANCE		TO COMPLETE PART NUMBER				
Plain Cap	w/Indicator Dot	A Diam.	B Height	C Diam.	D Depth	Style	Shaft Hole	Color
PC0D	DC0D	.500	.680	.300	.177	D	1	B
PC1D	DC1D	.700	.792	.485	.188		2	S
PC2D	DC2D	.900	.995	.640	.320		G	
PC3D	DC3D	1.250	.805	.750	.250		J	



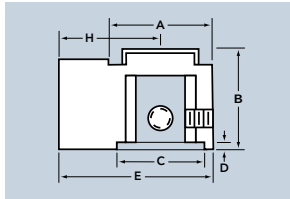
DIAL



Part Number		NUT CLEARANCE		TO COMPLETE PART NUMBER					
Plain Cap		A Diam.	B Height	C Diam.	D Depth	E Width	Style	Shaft Hole	Color
PC0F		.500	.680	.300	.177	.900	F	1	B
PC1F		.700	.792	.485	.188	1.150		2	S
PC2F		.900	.995	.640	.320	1.500		G	
PC3F		1.250	.805	.750	.250	1.837		J	



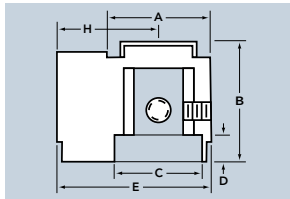
POINTER



Part Number		NUT CLEARANCE		TO COMPLETE PART NUMBER						
		A Diam.	B Height	C Diam.	D Depth	E Length	H Swing	Style	Shaft Hole	Color
PC0P		.500	.505	.435	.026	-	.490	P	1	B
PC1P		.700	.605	.485	.026	-	.680		2	S
PC2P		.900	.760	.640	.114	-	.885		G	
										J



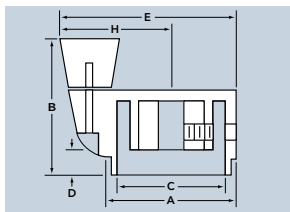
SKIRTED POINTER



Part Number		NUT CLEARANCE		TO COMPLETE PART NUMBER						
		A Diam.	B Height	C Diam.	D Depth	E Length	H Swing	Style	Shaft Hole	Color
PC0K		.500	.680	.300	.177	-	.490	K	1	B
PC1K		.700	.792	.485	.188	-	.680		2	S
PC2K		.900	.995	.640	.320	-	.885		G	
										J



SPINNER



Part Number		NUT CLEARANCE		TO COMPLETE PART NUMBER						
		A Diam.	B Height	C Diam.	D Depth	E Width	H Swing	Style	Shaft Hole	Color
DS 125-6-		1.250	1.350	.685	.250	1.715	1.090	S	1	B
DS 175-6-		1.750	1.758	.685	.320	2.359	1.484		2	S
										G
										J

ORDERING GUIDE FOR DESIGNER SERIES

Cap Style and Diameter	Style	Shaft Hole	Color
Indicate Part Number from Tables Above	N- Round D- Skirted Round F- Dial P- Pointer K- Skirted Pointer S- Spinner	1- 1/8" Round 2- 1/4" Round	B- Matte Black S- Gloss Black G- Matte Gray J- Gloss Gray

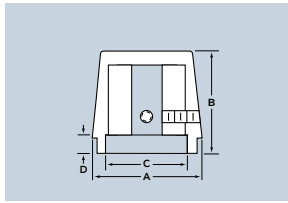
All Designer Series knobs come standard with 2 set screws.

EXAMPLE: PC1N-2-B

Cap, Diam. & Style	Shaft Hole	Color
Plain Cap	.250"	Matte Black
PC1N-	2	B



ROUND



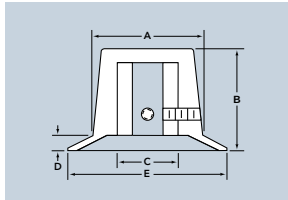
Part Number

To COMPLETE PART NUMBER

	A Diam.	B Height	C Diam.	D Depth	Shaft Hole
406R __	.625	.813	.458	.120	1 = 1/8"
407R __	.720	.813	.520	.120	2 = 1/4"
409R __	.875	.813	.660	.120	
412R __	1.250	.813	1.041	.120	



DIAL



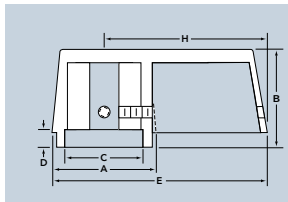
Part Number

To COMPLETE PART NUMBER

	A Diam.	B Height	C Diam.	D Depth	E Dial Diam.	Shaft Hole
406D __	.625	.813	.925	.120	.925	1 = 1/8"
407D __	.720	.813	.520	.120	1.050	2 = 1/4"
409D __	.875	.813	.660	.120	1.270	
412D __	1.250	.813	1.041	.120	1.710	



BAR POINTER



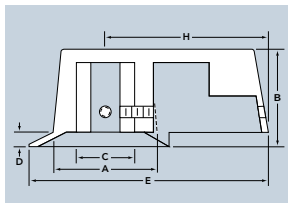
Part Number

To COMPLETE PART NUMBER

	A Diam.	B Height	C Diam.	D Depth	E Width	H Swing	Shaft Hole
406P __	.625	.813	.458	.120	1.223	.910	1 = 1/8"
407P __	.720	.813	.520	.120	1.480	1.120	2 = 1/4"
409P __	.875	.813	.660	.120	1.813	1.375	
412P __	1.250	.813	1.041	.120	2.625	2.000	



BAR POINTER
W/DIAL



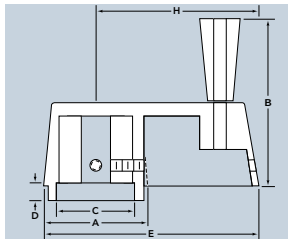
Part Number

To COMPLETE PART NUMBER

	A Diam.	B Height	C Diam.	D Depth	E Dial Diam.	H Swing	Shaft Hole
406PD __	.625	.813	.458	.120	1.373	.910	1 = 1/8"
407PD __	.720	.813	.520	.120	1.645	1.120	2 = 1/4"
409PD __	.875	.813	.660	.120	2.010	1.375	
412PD __	1.250	.813	1.041	.120	2.855	2.000	



BAR POINTER
CRANK



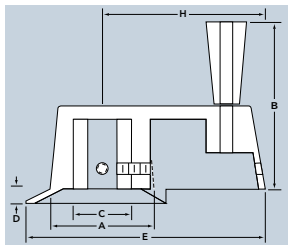
Part Number

To COMPLETE PART NUMBER

	A Diam.	B Height	C Diam.	D Depth	E Swing	Shaft Hole
409PC2B	.875	.813	.660	.120	1.375	1 = 1/8"
412PC2B	1.250	.813	1.041	.120	2.000	2 = 1/4"



BAR POINTER CRANK
W/DIAL



Part Number

To COMPLETE PART NUMBER

	A Diam.	B Height	C Diam.	D Depth	E Width	H Swing	Shaft Hole
409PDC2B	.875	.813	.660	.120	2.010	1.375	1 = 1/8"
412PDC2B	1.250	1.540	1.041	.120	2.855	2.000	2 = 1/4"

ORDERING GUIDE FOR INDUSTRIAL SERIES

Approximate Diameter	Style	Shaft Hole	Color
406 - 5/8"	R - Round	1 - 1/8"	B - Black Matte
407 - 3/4"	RWD - w/Dot (Round only)	2 - 1/4"	S - Black
409 - 7/8"	D - Round/Dial Skirt w/Arrow		Custom Colors and Custom Materials avail. by request)
412 - 1 1/4"	P - Bar Pointer PD - Bar Pointer/Dial Skirt w/Arrow		

All Industrial Series knobs come standard with 2 set screws.

Approximate Diameter	Style	Shaft Hole	Color
5/8"	Round	.250"	B - Black Matte
406	R	2	B

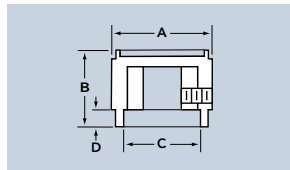
EXAMPLE: 406-R-2B



TRADITIONAL SERIES



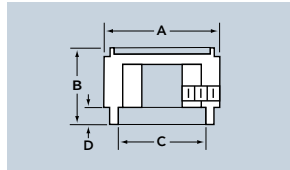
SKIRTED ROUND



Part Number	NUT CLEARANCE			TO COMPLETE PART NUMBER				
	A Diam.	B Height	C Diam.	D Depth	E Diam.	Style	Shaft Hole	Color
239 ___	.525	.640	.375	.100	-	R	1	B
						RC	2	S
						B	3	G
						BL	4	J



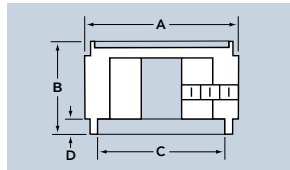
SKIRTED ROUND*



Part Number	NUT CLEARANCE			TO COMPLETE PART NUMBER				
	A Diam.	B Height	C Diam.	D Depth	E Diam.	Style	Shaft Hole	Color
252 ___	.700	.560	.500	.100	-	R	1	B
						RC	2	S
						B	3	G
						BL	4	J



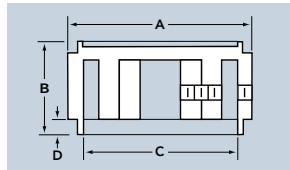
SKIRTED ROUND*



Part Number	NUT CLEARANCE			TO COMPLETE PART NUMBER				
	A Diam.	B Height	C Diam.	D Depth	E Diam.	Style	Shaft Hole	Color
257 ___	.950	.560	.625	.100	-	R	1	B
						RC	2	S
						B	3	G
						BL	4	J



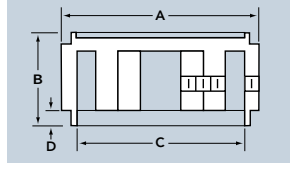
SKIRTED ROUND*



Part Number	NUT CLEARANCE			TO COMPLETE PART NUMBER				
	A Diam.	B Height	C Diam.	D Depth	E Diam.	Style	Shaft Hole	Color
258 ___	1.125	.574	.625	.100	-	R	1	B
						RC	2	S
						B	3	G
						BL	4	J



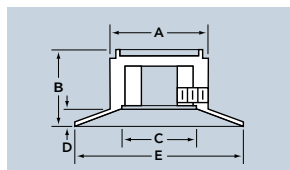
SKIRTED ROUND



Part Number	NUT CLEARANCE			TO COMPLETE PART NUMBER				
	A Diam.	B Height	C Diam.	D Depth	E Diam.	Style	Shaft Hole	Color
391 ___	1.400	.574	.625	.100	-	R	1	B
						RC	2	S
						B	3	G
						BL	4	J



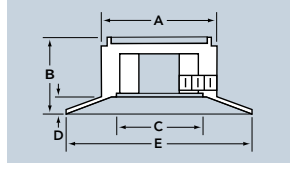
DIAL



Part Number	NUT CLEARANCE			TO COMPLETE PART NUMBER				
	A Diam.	B Height	C Diam.	D Depth	E Diam.	Style	Shaft Hole	Color
231 ___	.525	.640	.552	.100	.920	F	1	B
						G	2	S
							3	G
							4	J



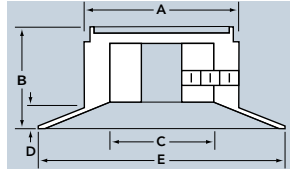
DIAL



Part Number	NUT CLEARANCE			TO COMPLETE PART NUMBER				
	A Diam.	B Height	C Diam.	D Depth	E Diam.	Style	Shaft Hole	Color
325 ___	.700	.600	.500	.100	1.125	F	1	B
						G	2	S
							3	G
							4	J



DIAL



Part Number	NUT CLEARANCE			TO COMPLETE PART NUMBER				
	A Diam.	B Height	C Diam.	D Depth	E Diam.	Style	Shaft Hole	Color
326 ___	.950	.640	.750	.100	1.505	F	1	B
						G	2	S
							3	G
							4	J

All Traditional Series knobs come standard with 2 set screws.

ORDERING GUIDE FOR TRADITIONAL SERIES

Cap Design & Diam	Style	Shaft Hole	Color
Indicate Part Number from Tables Above	R- Round Knob w/Plain Spun Inlay	1- 1/8" Round	B- Matte Black
	RC- Rnd Knob w/Spun Inlay + Blk.Line	2- 1/4" Round	S- Gloss Black
	B- Round Knob w/Plain Blk.Inlay	3- 3/8" "D" Hole	G- Matte Gray
	BL- Rnd Knob w/Blk.Inlay + WhiteLine	4- 1/2" "D" Hole	J- Gloss Gray
	G- Dial w/Plain Inlay		
	F- Dial w/ Line on Dial + Plain Inlay		

EXAMPLE: 239RC-2-B

Part Number	Style	Shaft Hole	Color
		.250"	Matte Black
239	RC-	2	- B

Custom lines, dots and markings of any color are available on spun aluminum or black inlays.

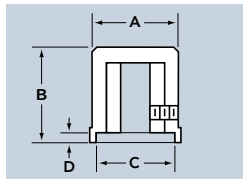




3008



3440



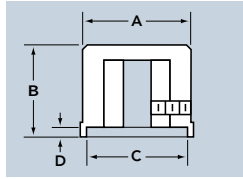
Part Number		NUT CLEARANCE		TO COMPLETE PART NUMBER			
Without Line	With Line	A Diam.	B Height	C Diam.	D Depth	Shaft Hole	Color
3008	3440	.500	.625	.430	.070	1 2 3 4	B S G J



3488



3489



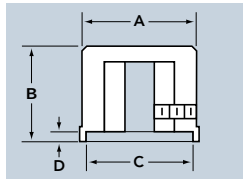
Part Number		NUT CLEARANCE		TO COMPLETE PART NUMBER			
Without Line	With Line	A Diam.	B Height	C Diam.	D Depth	Shaft Hole	Color
3488	3489	.720	.620	.625	.030	1 2 3 4	B S G J



3009



3441



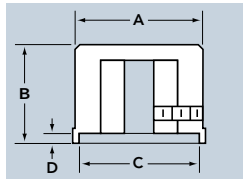
Part Number		NUT CLEARANCE		TO COMPLETE PART NUMBER			
Without Line	With Line	A Diam.	B Height	C Diam.	D Depth	Shaft Hole	Color
3009	3441	.850	.600	.680	.125	1 2 3 4	B S G J



3010



3442



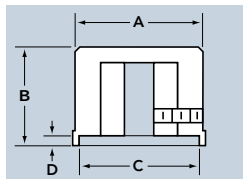
Part Number		NUT CLEARANCE		TO COMPLETE PART NUMBER			
Without Line	With Line	A Diam.	B Height	C Diam.	D Depth	Shaft Hole	Color
3010	3442	.975	.750	.810	.225	1 2 3 4	B S G J



3011



3443



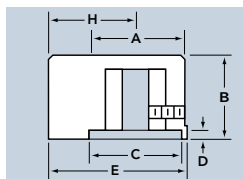
Part Number		NUT CLEARANCE		TO COMPLETE PART NUMBER			
Without Line	With Line	A Diam.	B Height	C Diam.	D Depth	Shaft Hole	Color
3011	3443	1.250	.800	1.000	.225	1 2 3 4	B S G J



3013



3444



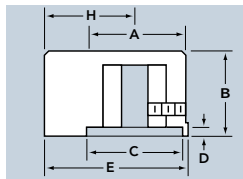
Part Number		NUT CLEARANCE		TO COMPLETE PART NUMBER					
Without Line	With Line	A Diam.	B Height	C Diam.	D Depth	E Length	H Swing	Shaft Hole	Color
3013	3444	.500	.625	.430	.070	.780	.500	1 2 3 4	B S G J



3014



3445



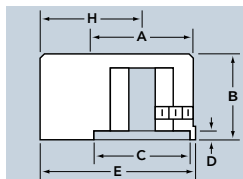
Part Number		NUT CLEARANCE		TO COMPLETE PART NUMBER					
Without Line	With Line	A Diam.	B Height	C Diam.	D Depth	E Length	H Swing	Shaft Hole	Color
3014	3445	.720	.620	.625	.030	1.00	.630	1 2 3 4	B S G J



3015



3446



Part Number		NUT CLEARANCE		TO COMPLETE PART NUMBER					
Without Line	With Line	A Diam.	B Height	C Diam.	D Depth	E Length	H Swing	Shaft Hole	Color
3015	3446	.850	.600	.680	.125	1.24	.800	1 2 3 4	B S G J

ORDERING GUIDE FOR 3000 SERIES

Style	Shaft Hole	Color
Indicate Part Number from Tables Above	1- 1/8" Round 2- 1/4" Round 3- 3/8" "D" hole 4- 1/2" "D" hole	B- Matte Black S- Gloss Black G- Matte Gray J- Gloss Gray

Style	Shaft Hole	Color
Plain Top	.250"	Matte Black
3010-	2	- B

EXAMPLE: 3010-2-B

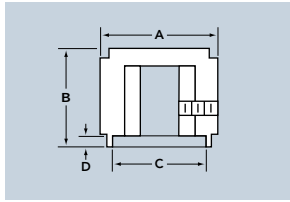
All 3000 Series knobs come standard with 2 set screws.



ELECTROMED SERIES



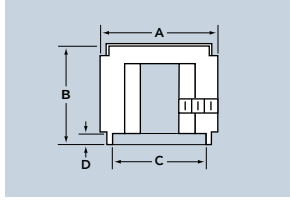
ROUND



Part Number	NUT CLEARANCE					TO COMPLETE PART NUMBER		
	Style	A Diam.	B Height	C Diam.	D Depth	E Width	Cap Style	Shaft Hole
EMS 5D_____	.500	.500	.380	.050	-	E	1	B
EMS 7D_____	.700	.600	.550	.075	-	F	2	S
EMS 9D_____	.840	.635	.675	.075	-			G
EMS 11D_____	1.100	.660	.900	.080	-			J



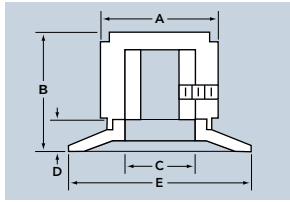
METAL CAP



Part Number	NUT CLEARANCE					TO COMPLETE PART NUMBER		
	Style	A Diam.	B Height	C Diam.	D Depth	E Width	Cap Style	Shaft Hole
EMS 5D_____	.500	.515	.380	.050	-	B	1	B
EMS 7D_____	.700	.615	.550	.075	-	C	2	S
EMS 9D_____	.840	.650	.675	.075	-			G
EMS 11D_____	1.100	.675	.900	.080	-			J



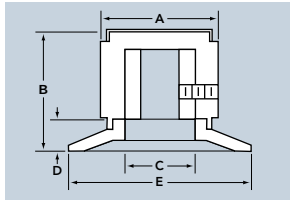
PLASTIC DIAL



Part Number	NUT CLEARANCE					TO COMPLETE PART NUMBER		
	Style	A Diam.	B Height	C Diam.	D Depth	E Width	Cap Style	Shaft Hole
EMS 7F_____	.700	.750	.410	.210	1.000	E	1	B
EMS 9F_____	.840	.775	.490	.210	1.125	F	2	S
EMS 11F_____	1.100	.790	.735	.210	1.560			G



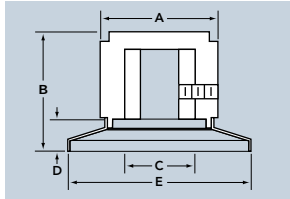
PLASTIC DIAL WITH METAL CAP



Part Number	NUT CLEARANCE					TO COMPLETE PART NUMBER		
	Style	A Diam.	B Height	C Diam.	D Depth	E Width	Cap Style	Shaft Hole
EMS 7F_____	.700	.750	.410	.210	1.000	B	1	B
EMS 9F_____	.840	.775	.490	.210	1.125	C	2	S
EMS 11F_____	1.100	.790	.735	.210	1.560			G



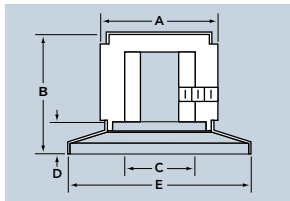
METAL DIAL



Part Number	NUT CLEARANCE					TO COMPLETE PART NUMBER		
	Style	A Diam.	B Height	C Diam.	D Depth	E Width	Cap Style	Shaft Hole
EMS 7M_____	.700	.735	.560	.210	1.000	E	1	B
EMS 9M_____	.840	.790	.675	.210	1.180	F	2	S
EMS 11M_____	1.100	.790	.900	.210	1.560			G



METAL DIAL WITH METAL CAP



Part Number	NUT CLEARANCE					TO COMPLETE PART NUMBER		
	Style	A Diam.	B Height	C Diam.	D Depth	E Width	Cap Style	Shaft Hole
EMS 7M_____	.700	.735	.560	.210	1.000	B	1	B
EMS 9M_____	.840	.790	.675	.210	1.180	C	2	S
EMS 11M_____	1.100	.790	.900	.210	1.560			G

TOLERANCES

A	B	C	D	E
±.030	±.030	±.020	±.020	±.020

ORDERING GUIDE FOR ELECTRO-MED SERIES

Series	Diameter	Cap Style	Shaft Hole	Color/Finish
EMS	5-1/2" 7-3/4" 9-7/8" 11-1/8"	F- Plastic Plain E- Plastic w/Indicator B- Metal Plain C- Metal w/Indicator	1- 1/8" Round 2- 1/4" Round	B- Matte Black S- Gloss Black G- Matte Gray J- Gloss Gray Custom Colors Available

SET SCREW SPECIFICATIONS

Diam.	Each Knob Furnished with (2) Set Screws	
	1/8" Shaft Hole	1/4" Shaft Hole
5	4-40 UNC-3A	4-40 UNC-3A
7	4-40 UNC-3A	4-40 UNC-3A
9	8-32 UNC-3A	8-32 UNC-3A
11	8-32 UNC-3A	8-32 UNC-3A

*D shapes, as well as specialized markings are available upon request.

EXAMPLE: EMS5DF1S

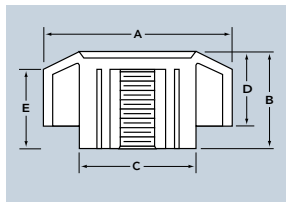
Series	Diameter	Style	Cap	Shaft Hole	Color
EMS	5	Round	Plain Plastic	1/8" Round	Gloss Black



CLAMPING KNOBS ABS molded thermoplastic material, the Coronado Series features 3 sizes of clamping knobs, utilizing brass inserts and studs. Parts are black, semi-gloss and textured. Decorative inlays are available. Coronado Series clamping knobs are also available with set screws.



FEMALE INSERT TYPE



Part Number

	A Diam.	B Height	C Diam.	D Depth
EI20	1.380	.800	.800	.620
EI30	1.750	.880	.880	.620
EI40	2.380	1.000	1.380	.620

EI "20" SERIES – FEMALE INSET TYPE

Type	Figure	E Dimension	Thread*
EI20-832	1	.645	8-32
EI20-1032	1	.645	10-32
EI20-2520	1	.645	1/4-20
EI20-3118	1	.645	5/16-18

EI "30" SERIES – FEMALE INSET TYPE

Type	Figure	E Dimension	Thread*
EI30-1032	1	.715	10-32
EI30-2520	1	.715	1/4-20
EI30-3118	1	.715	5/16-18
EI30-3716	1	.715	3/8-16

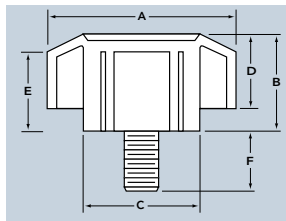
EI "40" SERIES – FEMALE INSET TYPE

Type	Figure	E Dimension	Thread*
EI40-2520	1	.835	1/4-20
EI40-3118	1	.835	5/16-18
EI40-3716	1	.835	3/8-16
EI40-5013	1	.835	1/2-13

*All threads are Right-Hand threading. To request L.H. threads, add "L" at the end of the number.



THREADED STUD TYPE



Part Number

	A Diam.	B Height	C Diam.	D Depth
ES20	1.380	.800	.800	.620
ES30	1.750	.880	1.250	.620
ES40	2.380	1.000	1.380	.620

ES "20" SERIES – THREADED STUD

Type	Figure	F Dimension	Thread*
ES20-252050	2	1/2	1/4-20
ES20-252062	2	5/8	1/4-20
ES20-252075	2	3/4	1/4-20
ES20-252010	2	1	1/4-20
ES20-252014	2	1-1/4	1/4-20
ES20-311862	2	5/8	5/16-18
ES20-311810	2	1	5/16-18
ES20-311815	2	1-1/2	5/16-18
ES20-371675	2	3/4	3/8-16
ES20-371610	2	1	3/8-16
ES20-371615	2	1-1/2	3/8-16

ES "30" SERIES – THREADED STUD

Type	Figure	F Dimension	Thread*
ES30-252050	2	1/2	1/4-20
ES30-252062	2	5/8	1/4-20
ES30-252075	2	3/4	1/4-20
ES30-252010	2	1	1/4-20
ES30-252014	2	1-1/4	1/4-20
ES30-311862	2	5/8	5/16-18
ES30-311810	2	1	5/16-18
ES30-311815	2	1-1/2	5/16-18
ES30-371675	2	3/4	3/8-16
ES30-371610	2	1	3/8-16
ES30-371615	2	1-1/2	3/8-16

ES "40" SERIES – THREADED STUD

Type	Figure	F Dimension	Thread*
ES40-252050	2	1/2	1/4-20
ES40-252062	2	5/8	1/4-20
ES40-252075	2	3/4	1/4-20
ES40-252010	2	1	1/4-20
ES40-252014	2	1-1/4	1/4-20
ES40-311862	2	5/8	5/16-18
ES40-311810	2	1	5/16-18
ES40-311815	2	1-1/2	5/16-18
ES40-371675	2	3/4	3/8-16
ES40-371610	2	1	3/8-16
ES40-371615	2	1-1/2	3/8-16
ES40-501310	2	1	1/2-13
ES40-501315	2	1-1/2	1/2-13
ES40-501320	2	2	1/2-13

*All threads are Right-Hand threading. To request L.H. threads, add "L" at the end of the number.



E20



E30

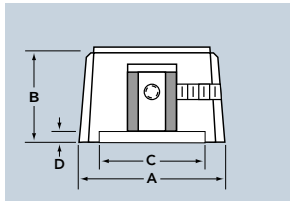


E40

See our [Clamp Knob Catalog](#) for the complete line of our clamp knobs and handles.



ROUND



PART NUMBER

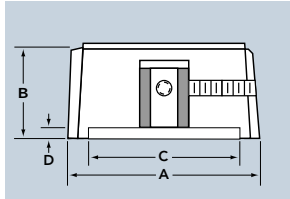
	A Diam.	B Height	C Diam.	D Depth
ST-1 N	.45	.55	—	—
ST-2 N	.50	.68	—	—
ST-3 N	.61	.55	.43	.09
ST-5 N	.75	.37	.50	.05
ST-6 N	1.15	.54	.88	.10
ST-7 N	1.50	.60	1.24	.10
ST-8 N	1.90	.82	—	—

TO COMPLETE PART NUMBER

Style	Shaft Hole	Color
N	1	BB
	2	GB
	3	YB
	4	RB
	5	



ROUND W/POINTER



PART NUMBER

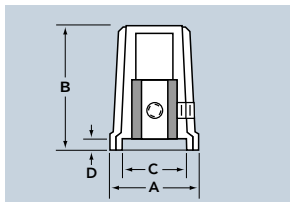
	A Diam.	B Height	C Diam.	D Depth
ST-1 P	.45	.55	—	—
ST-2 P	.50	.68	—	—
ST-3 P	.61	.55	.43	.09
ST-5 P	.75	.37	.50	.05
ST-6 P	1.15	.54	.88	.10
ST-7 P	1.50	.60	1.24	.10
ST-8 P	1.90	.82	—	—

TO COMPLETE PART NUMBER

Style	Shaft Hole	Color
P	1	BB
	2	GB
	3	YB
	4	RB
	5	



SKIRTED ROUND



PART NUMBER

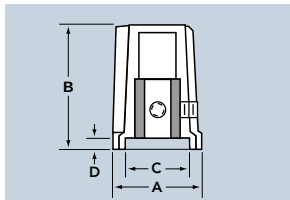
	A Diam.	B Height	C Diam.	D Depth
ST-1 D	.57	.71	.41	.09
ST-2 D	.62	.84	.48	.09
ST-3 D	.73	.71	.58	.09
ST-5 D	.84	.45	.60	.05
ST-6 D	1.25	.63	.98	.10
ST-7 D	1.67	.73	1.41	.10
ST-8 D	2.02	1.00	1.78	.13

TO COMPLETE PART NUMBER

Style	Shaft Hole	Color
D	1	BB
	2	GB
	3	YB
	4	RB
	5	



SKIRTED W/POINTER



PART NUMBER

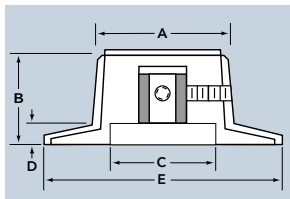
	A Diam.	B Height	C Diam.	D Depth
ST-1 K	.57	.71	.41	.09
ST-2 K	.62	.84	.48	.09
ST-3 K	.73	.71	.58	.09
ST-5 K	.84	.45	.60	.05
ST-6 K	1.25	.63	.98	.10
ST-7 K	1.67	.73	1.41	.10
ST-8 K	2.02	1.00	1.78	.13

TO COMPLETE PART NUMBER

Style	Shaft Hole	Color
K	1	BB
	2	GB
	3	YB
	4	RB
	5	



ROUND W/DIAL



PART NUMBER

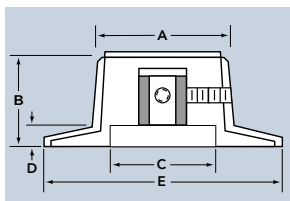
	A Diam.	B Height	C Diam.	D Depth	E Diam.
ST-1 G	.65	.80	.55	.08	1.08
ST-2 G	.91	.86	.65	.22	1.42
ST-3 G	1.14	.72	.70	.18	1.74

TO COMPLETE PART NUMBER

Style	Shaft Hole	Color
G	1	BB
	2	GB
	3	YB
	4	RB
	5	



ROUND W/DIAL W/INDICATOR



PART NUMBER

	A Diam.	B Height	C Diam.	D Depth	E Diam.
ST-1 F	.65	.80	.55	.08	1.08
ST-2 F	.91	.86	.65	.22	1.42
ST-3 F	1.14	.72	.70	.18	1.74

TO COMPLETE PART NUMBER

Style	Shaft Hole	Color
F	1	BB
	2	GB
	3	YB
	4	RB
	5	

EHC's new "soft touch" knobs come in a variety of colors and can even be made in custom colors and are available with custom markings. Shaft configurations include a bushing with 2 set screws, a spring clip, a knurled plastic shaft or a "D" flat shaft.

Soft Touch

also available as

Squared Fluted Knobs

Push-on Knobs



Rounded Fluted Knobs



Over-molded Knobs

ORDERING GUIDE FOR ST SERIES

Style Plain or w/Indicator	Diameter	Shaft Hole (or Spring)	Color	SET SCREW SPECIFICATIONS		
				Series	1/8" Shaft Hole	1/4" Shaft Hole
N-Plain Round	Indicate Part Number from Tables Above	1- 1/8" Round	BB- Black Matte	1	4-40 UNC-3A	4-40 UNC-3A
D-Skirted Round		2- 1/4" Round	GB- Gray Matte	2	4-40 UNC-3A	4-40 UNC-3A
F- Rnd Dial w/Indicator		3- 3/8" "D" Hole*	YB- Yellow	3	4-40 UNC-3A	4-40 UNC-3A
G-Round w/IDial		4- 1/4" "D" Hole*	RB- Red	5	4-40 UNC-3A	4-40 UNC-3A
P- Round w/Pointer		5-.190 Round	LB- Blue	6	4-40 UNC-3A	8-32 UNC-3A
K-Skirted w/Pointer		* D-Flat on Pointer.	WB-White	7	4-40 UNC-3A	8-32 UNC-3A
				8	4-40 UNC-3A	8-32 UNC-3A

See table below for Push-on control styles.*

CONTROL STYLES SPECIFICATIONS EXAMPLES FOR PUSH-ON KNOBS

Letter	Shaft Size	Height	Description
A	1/4" Knurl	3/8"	Standard Knurl- 24 Teeth
C	6mm diam. x 4.5mm Flat	3/8"	For Spring #79-06600P
V	.250" diam. x .156" Flat	13/32"	For Spring #79-02000P

If you require a non-standard spring style not shown in the above table please consult an EHC engineer for an alternate or custom solution.



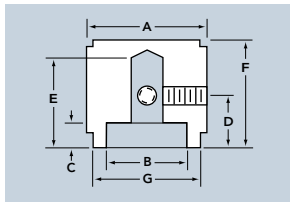
EXAMPLE: ST-2P2YB2C	Series	Diameter	Style	Push-on* or Shaft Hole	Color	Set Screws
		.500	Skirted Pointer	.250"	Yellow	Quantity
	ST-	2	K	2	YB	2

* For Push-on knobs use letter designation for spring (Control Style) style. Push-on knobs require no set screws.

MACHINED ALUMINUM KNOBS



PV SERIES

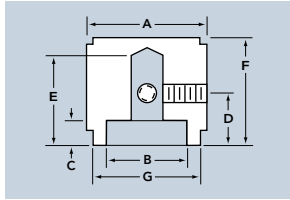


Part Number	A	B	C	D	E	F	G	2 Set Screws
Style	Diam.	Diam.	Height	Height	Height	Height	Diam.	
PV-12	.50	.375	.160	.29	.510	.62	.450	6-32
PV-19	.75	.590	.160	.29	.510	.62	.695	6-32
PV-25	.93	.708	.160	.29	.510	.62	.885	6-32
PV-32	1.25	.984	.160	.29	.510	.62	1.195	6-32

PV Series knobs come in a Natural or Black Anodized finish.



PB SERIES

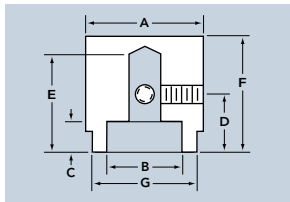


Part Number	A	B	C	D	E	F	G	2 Set Screws
Style	Diam.	Diam.	Height	Height	Height	Height	Diam.	
PB-12	.50	.375	.120	.33	.640	.79	.450	6-32
PB-19	.75	.590	.120	.33	.640	.79	.710	6-32
PB-25	.93	.708	.120	.33	.640	.79	.885	6-32
PB-32	1.25	.984	.120	.33	.640	.79	1.195	6-32

PB Series knobs come in a Natural or Black Anodized finish.



PVL SERIES

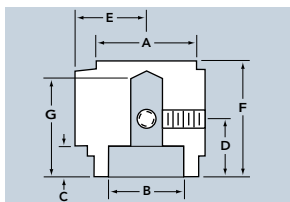


Part Number	A	B	C	D	E	F	G	2 Set Screws
Style	Diam.	Diam.	Height	Height	Height	Height	Diam.	
PVL-12	.50	.375	.157	.29	.510	.62	.445	6-32
PVL-19	.75	.590	.157	.29	.510	.62	.695	6-32
PVL-25	.93	.708	.157	.29	.510	.62	.885	6-32
PVL-32	1.25	.984	.157	.29	.510	.62	1.195	6-32

PVL Series knobs come in a Natural or Black Anodized finish.



PKP SERIES

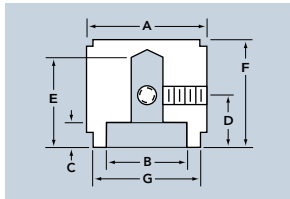


Part Number	A	B	C	D	E	F	G	2 Set Screws
Style	Diam.	Diam.	Height	Height	Radius	Height	Height	
PKP-12	.50	.375	.120	.32	.375	.63	.510	6-32
PKP-19	.75	.590	.120	.32	.510	.63	.510	6-32
PKP-25	.93	.708	.120	.32	.629	.63	.510	6-32

PKP Series knobs come in a Natural or Black Anodized finish.



PV TWO-TONE SERIES

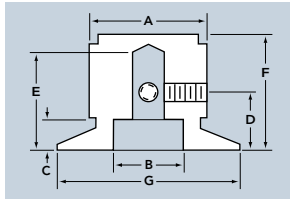


Part Number	A	B	C	D	E	F	G	2 Set Screws
Style	Diam.	Diam.	Height	Height	Height	Height	Diam.	
PV-12 BA	.50	.375	.160	.29	.510	.62	.450	6-32
PV-19 BA	.75	.590	.160	.29	.510	.62	.695	6-32
PV-25 BA	.93	.708	.160	.29	.510	.62	.885	6-32
PV-32 BA	1.25	.985	.160	.29	.510	.62	1.195	6-32

PV Two-Tone Series knobs come in a Natural and Black Anodized finish.



PVS TWO-TONE SERIES

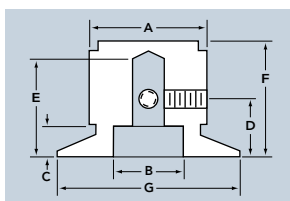


Part Number	A	B	C	D	E	F	G	2 Set Screws
Style	Diam.	Diam.	Height	Height	Height	Height	Diam.	
PVS-12 BA	.50	.375	.177	.29	.510	.62	.750	6-32
PVS-19 BA	.75	.590	.177	.29	.510	.62	1.120	6-32
PVS-25 BA	.93	.708	.177	.29	.510	.62	1.640	6-32

PVS Two-Tone Series knobs come in a Natural and Black Anodized finish.



PVS SERIES



Part Number	A	B	C	D	E	F	G	2 Set Screws
Style	Diam.	Diam.	Height	Height	Height	Height	Diam.	
PVS-12	.50	.375	.177	.29	.510	.62	.750	6-32
PVS-19	.75	.590	.177	.29	.510	.62	1.120	6-32
PVS-25	.93	.708	.177	.29	.510	.62	1.640	6-32

PVS Series knobs come in a Natural or Black Anodized finish.

ORDERING GUIDE FOR MACHINED ALUMINUM SERIES

Series	Diameter	Finish	Shaft Hole
	.500	Natural	1/8" Round
PB	12	A	1

EXAMPLE: PB-12A-1

Series	Diameter	Finish/Color	Shaft Hole
PB	12- 1/2"	A- Clear Anodize	1- 1/8" Round
PV	19- 3/4"	B- Black Anodize	2- 1/4" Round
PKP	25- 15/16"	BA-2-tone	
PVL	32- 1/4"		
PVS			

All of the above knobs are available for .125" and .250" shaft sizes.



x= outer diameter
y= height



378 B10
x=.64
y=.39



232 B01
x=.51
y=.68



264 B11
x=.52
y=.65



265 B11
x=.77
y=.77



611 B11
x=.76
y=.63



612 B12
x=.76
y=.86



261 B21
x=.83
y=.57



490 B21
x=.77
y=.71



153 B21
x=.83
y=.57



1047 B23
x=.89
y=1.03



1097 B31
x=1.14
y=.76



2684 B31
x=1.33
y=.70



2779 B32
x=1.17
y=.88



324 B31
x=1.13
y=.51



379 B41
x=1.61
y=.83



296 B41
x=1.40
y=.64



112 D21
x=1.13
y=.66



6 D31
x=.91
y=.57



1325 D31
x=1.13
y=.67



329 D40
x=1.51
y=.49



1706 D42
x=1.52
y=.89



405 F10
x=.56
y=.34



471 F10
x=.77
y=.48



474 F21
x=.84
y=.61



475 F31
x=1.03
y=.67

x= outer diameter
y= height



472 F31
x=1.27
y= .67



385 F42
x=1.26
y= .64



404 F21
x=.86
y=.58



374 F31
x=1.20
y= .70



406 F41
x=1.44
y= .77



98 M21
x=.89
y=.64



438 M30
x=1.12
y= .40



319 P00
x=.41
y=.39



699 P00
x=.42
y=.39



228 P00
x=.35
y=.51



688 P01
x=.44
y=.78



1 P10
x=.79
y=.40



344 P11
x=.72
y=.77



138 P11
x=.77
y=.70



3220 P22
x=1.52
y= .89



173 P30
x=1.27
y= .52



375 P41
x=1.30
y= .62



3000 R00
x=.40
y=.40



408 R00
x=.52
y=.64



410 R01
x=.51
y=.64



431 R01
x=.52
y=.64



353 R10
x=.51
y=.41



310 R10
x=.63
y=.51



227 R11
x=.52
y=.52



380 R11
x=.52
y=.77

x = outer diameter
y = height



1789 R11
x=.55
y=.65



229 R11
x=.55
y=.70



393 R11
x=.61
y=.67



695 R11
x=.71
y=1.00



1715 R11
x=.77
y=.76



395 R21
x=.77
y=.67



426 R21
x=.82
y=.74



686 R21
x=.89
y=.64



634 R21
x=.92
y=.76



2300 R22
x=.75
y=.83



107 R30
x=1.05
y=.52



188 R31
x=.95
y=.64



445 R31
x=1.39
y=.54



3926 R33
x=1.52
y=1.83



PMS91528-2
x=.54
y=.69



M3926/3A-1
x=1.02
y=1.03

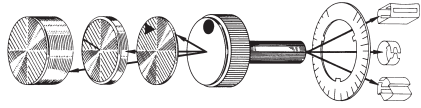


M3926/1A-0
x=.77
y=.72



M3926/1A-3
x=1.52
y=1.85

Consumer Push-On Knobs



CUSTOMIZING OPTIONS [PAGES 24 through 25](#)



KC AUDIO KNOBS & CAPS [PAGE 26](#)



ROUND PUSH-ON KNOBS [PAGES 27 through 30](#)



PUSH-ON DIAL KNOBS [PAGE 31](#)



PUSH-ON POINTER KNOBS [PAGE 32](#)



PUSH-ON BAR KNOBS [PAGE 33](#)



FLUTED PUSH-ON KNOBS [PAGE 34](#)



BUTTONS & SLIDERS [PAGE 34](#)



OVEN & GRILL KNOBS [PAGE 35](#)



BUMPERS [PAGE 35](#)



MS SERIES PUSH-ON KNOBS PAGE 38



DESIGNER SERIES PUSH-ON KNOBS PAGE 38



RS SERIES PUSH-ON KNOBS PAGE 39



CS SERIES PUSH-ON KNOBS PAGE 40



3000 SERIES PUSH-ON KNOBS PAGE 40



TRADITIONAL SERIES PUSH-ON KNOBS PAGE 41



CORONADO SERIES PUSH-ON KNOBS PAGE 41



GEMINI SERIES PUSH-ON KNOBS PAGE 41



SPECIAL KNOBS PAGE 42

TECHNICAL DATA PAGE 43

MECHANICAL TOLERANCES PAGE 44

If we've learned one thing in our more than 50 years of business, it's this: the mind of man has an endless capacity to dream — and to turn those dreams into reality.

Ideas that were science fiction when we started out in business are now commonplace products in millions of homes.

We've also learned that men who have dreamed the dreams and found ways to make them come true, are, for the most part, dedicated, demanding perfectionists — perfectionists who expect every detail to coincide with their ideas.

COMPLETE IN-HOUSE OPERATION

We are proud to have earned a reputation as a company with the ability to respond to the most exacting specifications and to surpass every expectation. We attribute a lot of it to the fact that every phase of production is handled in-house.

We do our own design and engineering, prototyping, our own tool making, plastic molding, screw machining, metal fabrication, automatic drilling and tapping, hot stamping, silk screening, laser etching, photo etching, painting, finishing, and much more.

THE HIGHEST QUALITY WITH THE SHORTEST LEAD TIME

We control every aspect of production. This allows us to remain competitive while also producing the highest quality product. We can maintain an extremely high level of quality control, as well as, meet the tightest delivery schedule requirements.

STOCK AND SPECIAL TOOLING

Naturally we offer a complete line of stock tooling as well as the ability to modify existing molds. But, just as important, we can tool from scratch — to your original designs.

We can make knobs and dials no matter what that knob or dial might be — whatever

it might look like. If you can enclose a plastic part in your hand, we can mold it better, faster and more efficiently by the use of our universal pocket molds. This means that our customers can take advantage of tooling, a cavity or core only, at low cost, yet still have production costs of a multi-cavity mold.

ANY SIZE, ANY SHAPE

Our standard knobs come in sizes from 1/4 to 3 inches in diameter. And, while they come in an infinite variety of shapes, if you need one that's different, we can design and make it for you. We already make knobs to fit just about every shaft that there is.

MATERIAL

Unless you require a specific material, all Electronic Hardware knobs and dials are molded thermoplastic. So, you get knobs that have the characteristics that you need — knobs that are strong, heat resistant, and have dimensional stability. But, we also can make knobs from any thermoplastic or thermoset material that you request.

TRIM

We'll add any kind of inlay or cap, diamond cut, decorative, spun, formed cap, whatever. Or, any finish: metallic to mylar.

On the following pages you'll find many of the standard knobs and dials that we make. But if you don't see what you're looking for, give us a call — because we can make exactly what you need.

SECONDARY OPERATION

We make it possible for your part to be molded and finished under one roof. Silk screening, sonic welding, automatic drilling and tapping, hot stamping, pad printing, spray painting, laser engraving and solvent bonding are all options that are readily available. We're prepared to do it immediately — with quality. This all translates into competitive piece prices for your parts. *The Bottom Line!*



Universal mold base



Ultrasonic insertion



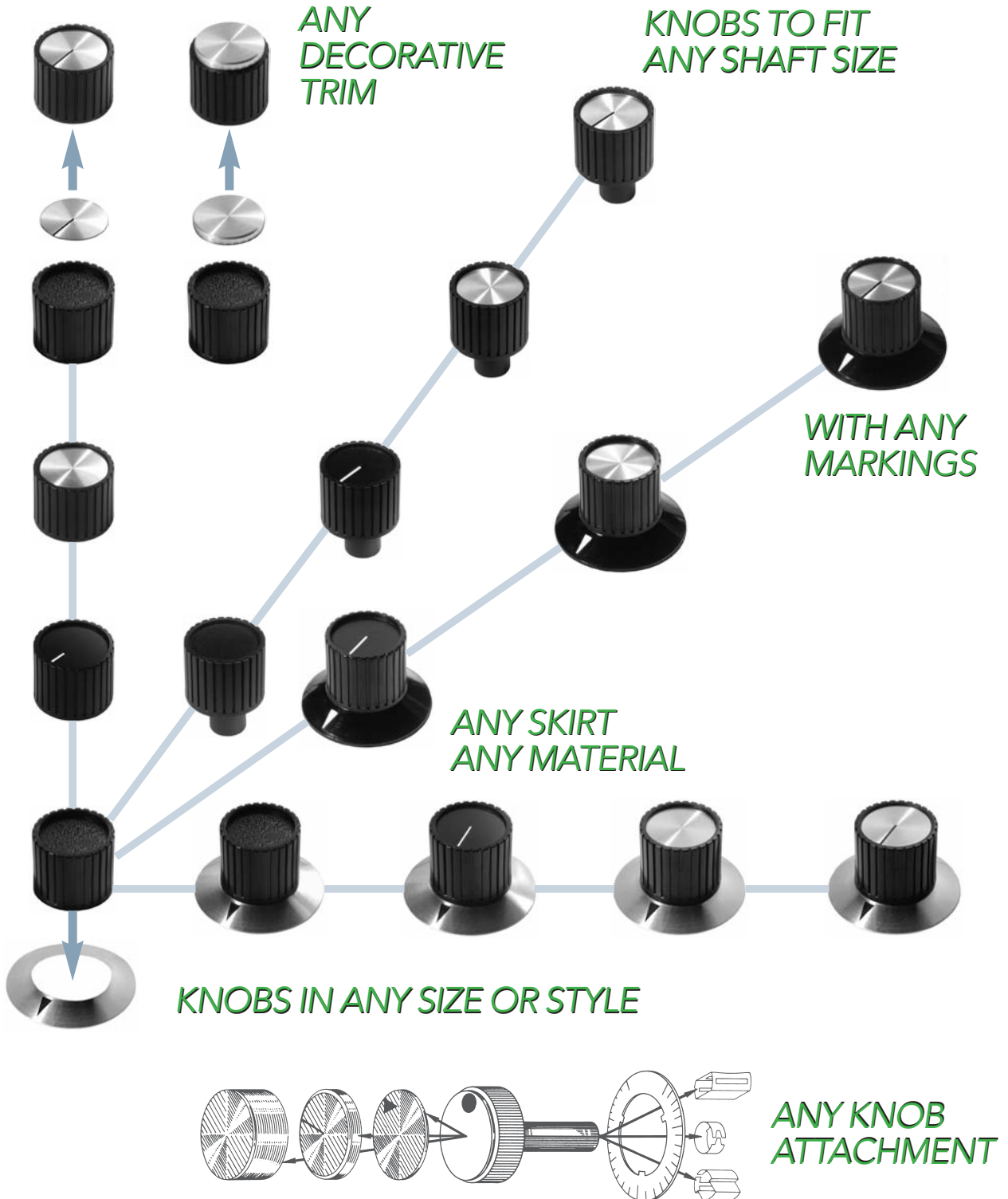
Pad printing



Hand painted markings

WE CAN MAKE EXACTLY WHAT YOU NEED.

To order your part specify the style number from our catalog or website. Then give us the diameter, the shaft size, the number of set screws, the markings and any additional finishing options you would like.



For Some Styles Minimum Orders May Apply.



Push-On Knobs

x = outer diameter
y = height



509
x = .27
y = .68



567
x = .28
y = .44



574
y = .02



568
x = .45
y = .53

Available in any color
with any markings.



569
x = .55
y = .67



575
y = .03



570
x = .73
y = .69

ROUND KNOBS

Push-On Knobs

x= outer diameter
y= height



3000
x=.40
y=.40



342
x=.45
y=1.27



424
x=.48
y=.56



413
x=.50
y=.34



353
x=.51
y=.41



5CF
x=.51
y=.43



227
x=.51
y=1.21



227
x=.52
y=.52



3008
x=.52
y=.62



410
x=.52
y=.64



431
x=.52
y=.64



232
x=.52
y=.69



380
x=.52
y=.77



229
x=.55
y=.70



484
x=.59
y=.45



309
x=.59
y=.59



486
x=.59
y=.85



249
x=.61
y=.64



393
x=.61
y=.67



225
x=.62
y=.65



310
x=.63
y=.51



350
x=.64
y=.20



167
x=.64
y=.64



373
x=.71
y=.52



695
x=.71
y=1.00

ROUND KNOBS

Push-On Knobs

x = outer diameter
y = height



345
x=.72
y=.71



698
x=.72
y=.81



71
x=.73
y=.67



396
x=.73
y=.69



367
x=.73
y=.77



518
x=.75
y=.78



1428
x=.76
y=.64



447
x=.76
y=.70



A31
x=.77
y=.45



395
x=.77
y=.67



121
x=.77
y=.77



327
x=.77
y=.48



327
x=.77
y=.78



376
x=.80
y=.42



496
x=.80
y=.60



426
x=.82
y=.74



416
x=.83
y=.47



260
x=.83
y=.64



352
x=.83
y=.64



3441
x=.87
y=.60



90
x=.89
y=.64



83
x=.89
y=.64



192
x=.89
y=.64



292
x=.90
y=.61



634
x=.92
y=.76

Push-On Knobs

x= outer diameter
y= height



253
x=.93
y=.45



49
x=.93
y=.68



401
x=.94
y=.72



96
x=.95
y=.20



188
x=.95
y=.64



106
x=.95
y=.67



257
x=.96
y=.56



520
x= 1.00
y= .375



248
x=1.01
y= .68



289
x= 1.04
y= .54



66
x=1.05
y= .33



107
x=1.05
y= .52



108
x=1.06
y= .52



517
x= 1.06
y= .78



331
x=1.10
y= .52



13
x=1.11
y= .54



82
x=1.14
y= .36



14
x=1.14
y= .45



415
x=1.15
y= .35



510
x= 1.19
y= .61



45
x=1.20
y= .30



47
x=1.20
y= .54



282
x=1.20
y= .57



210
x=1.23
y= .64



92
x= 1.25
y= .66

Push-On Knobs

x = outer diameter
y = height



67
x = 1.27
y = .33



412
x = 1.28
y = .61



109
x = 1.33
y = .52



110
x = 1.33
y = .52



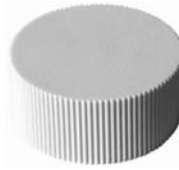
349
x = 1.35
y = .56



449
x = 1.35
y = .64



445
x = 1.39
y = .54



437
x = 1.40
y = .55



391
x = 1.40
y = .58



418
x = 1.50
y = .52



105
x = 1.51
y = .54



233
x = 1.52
y = .27



341
x = 1.52
y = .50



194
x = 1.57
y = .57



223
x = 1.57
y = .83



462
x = 1.61
y = .24



400
x = 1.77
y = 1.18



420
x = 1.80
y = .58

Push-On Knobs

x= outer diameter
y= height



531
x= .60
y=.47



325
x= .62
y=1.13



1334
x=.76
y=.63



268
x=.77
y=.64



246
x=.78
y=.65



285
x=.88
y=.59



321
x=.88
y=.77



231
x=.90
y=.67



6
x=.91
y=.57



266
x=1.11
y= .64



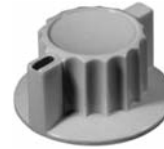
281
x= 1.12
y= .59



363
x=1.13
y= .65



444
x=1.14
y= .52



359
x=1.14
y= .58



112
x=1.14
y= .67



361
x=1.14
y= .73



427
x=1.20
y= .82



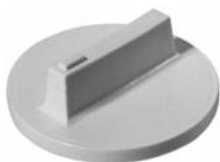
208
x=1.46
y= .89



163
x=1.55
y= .47



360
x= 1.63
y= .50



360
x=1.66
y= .53



628
x=1.66
y= .81



421
x=2.27
y= .87



519
x= 2.33
y=1.00



483
x= 2.66
y=1.12

Push-On Knobs

x= outer diameter
y= height



392
x=.34
y=.32



228
x=.35
y=.51



319
x=.41
y=.39



688
x=.44
y=.78



357
x=.64
y=.47



259
x=.67
y=.52



344
x=.72
y=.77



138
x=.75
y=.68



1
x=.79
y=.40



387
x=.81
y=.46



388
x=.81
y=.48



377
x=.81
y=.58



27
x=.91
y=.58



162
x=.92
y=.52



126
x=.98
y=.76



315
x=1.00
y=.54



193
x=1.00
y=.62



132
x=1.01
y=.62



2088
x=1.06
y=.75



156
x=1.12
y=.54



18
x=1.13
y=.70



370
x=1.17
y=.55



173
x=1.27
y=.52



433
x=1.27
y=.62



375
x=1.30
y=.62



480
x=1.50
y=.85

Push-On Knobs

x= outer diameter
y= height



232
x= .50
y= .68



264
x= .52
y= .65



432
x= .52
y= .72



378
x= .64
y= .39



234
x= .69
y= .66



455
x= .70
y= .57



265
x= .75
y= .75



394
x= .77
y= .67



265
x= .77
y= .77



161
x= .78
y= .33



98
x= .87
y= .63



261
x= .83
y= .57



153
x= .83
y= .57



419
x= 1.08
y= .56



129
x= 1.12
y= .75



324
x= 1.12
y= .98



324
x= 1.13
y= .52



129
x= 1.14
y= .88



303
x= 1.33
y= .43



118
x= 1.35
y= .56



196
x= 1.40
y= .64



286
x= 1.40
y= .87



506
x= 1.50
y= .94



379
x= 1.61
y= .83



316
x= 1.63
y= .58



425
x= 1.63
y= .86



423
x= 1.64
y= .89



428
x= 1.67
y= .80



351
x= 1.76
y= .98



430
x= 1.98
y= .75

FLUTED KNOBS

Push-On Knobs

x= outer diameter
y= height



405
x=.56
y=.34



436
x=.63
y=.31



404
x=.86
y=.58



374
x=1.20
y=.70



385
x=1.26
y=.64



406
x=1.44
y=.77



508
x=1.62
y=.44

BUTTONS & SLIDERS

Push-On Knobs



124
x=.24
y=.20



A103
x=.42
y=.30



A11
x=.45
y=.31



A115
x=.44
y=.40



A52
x=.50
y=.50



A121
x=.60
y=.30



A51
x=.39
y=.50



A120
x=.43
y=.36



A93
x=.61
y=.57



A113
x=1.50
y=.34



503
x=.74
y=.45



503
x=.74
y=.45



703
x=.20
y=.40



724
x=.29
y=.44



782
x=.39
y=.44

OVEN & GRILL KNOBS

Push-On Knobs

x = outer diameter
y = height



421
x=2.27
y= .87



423
x=1.64
y= .89



434
x=1.77
y=1.27



439
x=2.34
y= .93



468
x=1.95
y=1.47



483
x= 2.66
y=1.12



500
x=1.64
y= .89



584
x=2.00
y= .96



626
x= 2.50
y=1.71



668
x= 1.63
y=1.47



531
x=1.00
y= .67



544
x=1.50
y= .67



746
x=1.83
y= .88



740
x=2.00
y= .88



748
x= 2.50
y=1.00

BUMPERS

x = outer diameter
y = height



AK574
x= .610
y= .490



AK575
x= .700
y= .375



AK576-4
x= .986
y= .813



AK577-8
x= .610
y= .490



7117
x= .880
y= .870



REC2081S
x= .625
y= .313



REC2082S
x= .625
y= .500



REC2084S
x= .750
y= .375

We make the parts you need

NOT ONLY DO WE MANUFACTURE
THE WORLD'S LARGEST SELECTION OF KNOBS ...



WE MAKE AN ENDLESS ASSORTMENT
OF QUALITY INDUSTRIAL COMPONENTS.

***Adjustable Ratchet Handles • Adjustable Tension Levers • Handwheels • Crank Handles
Aluminum Bridge & Ledge Handles • Hinges • Dimple & Metal 1 and 2 Prong Knobs
Index Pull s • Cam Style Plungers • Leveling Feet • Custom Molding and Tooling***

We manufacture both English and metric sizes. We also make parts to order
in custom sizes and offer a variety of materials and finishing options.

Send us an rfq www.ehcoem.com



PUSH-ON KNOB SERIES

INDEX

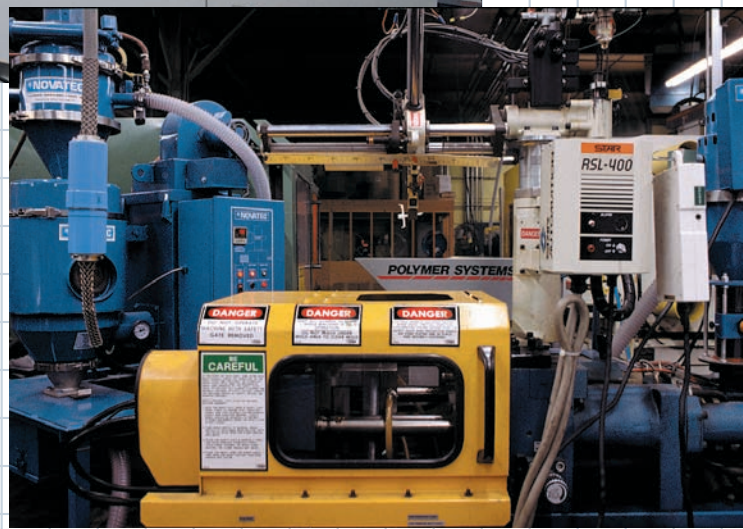
- MILITARY STYLE KNOBS . . . 38
- DESIGNER SERIES 38
- REGENT SERIES 39
- CONTEMPORARY SERIES . . 40
- 3000 SERIES 40
- TRADITIONAL SERIES 41
- CORONADO CLAMP SERIES 41
- GEMINI SERIES 41
- SPECIAL ORDER KNOBS . . . 42

Through the use of robotics and specialized automation systems, EHC is able to better implement continuous improvement programs that will reduce costs, and ensure maximum output and quality.



Experienced personnel working with state-of-the-art equipment, enable EHC to maintain a high standard of quality in a fast-paced competitive marketplace.

Automatic small parts molding is efficiently accomplished with the use of robotic pickers and material handling equipment.



MS PUSH-ON KNOBS

Push-On Knobs



1N

Part Number

Plain Top	White Dot	Diam.	Height
0N	0C	.500	.510
1N	1C	.700	.610
2N	2C	.900	.790
3N	3C	1.250	.700
4N	4C	1.750	.850
5N	5C	2.250	.875



1D

Part Number

Plain Top	White Dot	Diam.	Height
0D	0E	.500	.655
1D	1E	.700	.782
2D	2E	.900	1.010
3D	3E	1.250	.850
4D	4E	1.750	1.070
5D	5E	2.250	1.095



1F

Part Number

With Arrow	Plain Dial	Diam.	Height
0F	0G	.500	.655
1F	1G	.700	.782
2F	2G	.900	1.010
3F	3G	1.250	.850
4F	4G	1.750	1.070
5F	5G	2.250	1.095



1P

Part Number

	Diam.	Height
0P	.500	.510
1P	.700	.610
2P	.900	.790



1K

Part Number

	Diam.	Height
0K	.500	.655
1K	.700	.782
2K	.900	1.010

DESIGNER SERIES PUSH-ON KNOBS

Push-On Knobs



DC1N

Part Number

Plain Cap	w/Indicator Dot	Diam.	Height
PC0N	DC0N	.500	.505
PC1N	DC1N	.700	.605
PC2N	DC2N	.900	.760
PC3N	DC3N	1.250	.630



DC1D

Part Number

Plain Cap	w/Indicator Dot	Diam.	Height
PC0D	DC0D	.500	.680
PC1D	DC1D	.700	.792
PC2D	DC2D	.900	.995
PC3D	DC3D	1.250	.805



DC1F

Part Number

Plain Cap	w/Indicator Dot	Diam.	Height
PC0F	DC0F	.500	.680
PC1F	DC1F	.700	.792
PC2F	DC2F	.900	.995
PC3F	DC3F	1.250	.805



PC1P

Part Number

	Diam.	Height
PC0P	.500	.505
PC1P	.700	.605
PC2P	.900	.760



PC1K

Part Number

	Diam.	Height
PC0K	.500	.680
PC1K	.700	.792
PC2K	.900	.995

Push-On Knobs



1 N

Part Number			
Plain Spun Inlay	w/Indicator Line	Diam.	Height
EH71-0N	-0C	.500	.510
EH71-1N	-1C	.700	.610
EH71-2N	-2C	.900	.790
EH71-3N	-3C	1.250	.700
EH71-4N	-4C	1.750	.850



1 D

Part Number			
Plain Spun Inlay	w/Indicator Line	Diam.	Height
EH71-0D	-0E	.500	.660
EH71-1D	-1E	.700	.780
EH71-2D	-2E	.900	1.010
EH71-3D	-3E	1.250	.850
EH71-4D	-4E	1.750	1.070



1 F

Part Number			
Dial w/Arrow	Plain Spun Inlay	Diam.	Height
EH71-0F	-0G	.500	.660
EH71-1F	-1G	.700	.780
EH71-2F	-2G	.900	1.010
EH71-3F	-3G	1.250	.850



1 P

Part Number		
	Diam.	Height
EH71-0P	.500	.510
EH71-1P	.700	.610
EH71-2P	.900	.790



1 K

Part Number		
	Diam.	Height
EH71-0K	.500	.660
EH71-1K	.700	.780
EH71-2K	.900	1.010



1 SB

Part Number		
	Diam.	Height
EH71-0SB	.500	.510
EH71-1SB	.700	.610
EH71-2SB	.900	.640



1 DSB

Part Number		
	Diam.	Height
EH71-0DSB	.500	.660
EH71-1DSB	.700	.780
EH71-2DSB	.900	1.010



1 LP

Part Number		
	Diam.	Height
EH71-0LP	.500	.510
EH71-1LP	.700	.610
EH71-2LP	.900	.640



1 NP

Part Number		
	Diam.	Height
EH71-0NP	.500	.510
EH71-1NP	.700	.610
EH71-2NP	.900	.640
EH71-3NP	1.250	.700

CS PUSH-ON KNOBS

Push-On Knobs



5N

Part Number

Without Indicator	With Indicator	Diam.	Height
5N	5C	.500	.430
7N	7C	.700	.532
9N	9C	.900	.731
12N	12C	1.250	.600



5D

Part Number

Without Indicator	With Indicator	Diam.	Height
5D	5E	.500	.585
7D	7E	.700	.682
9D	9E	.900	.935
12D	12E	1.250	.750



5F

Part Number

Without Arrow	With Arrow	Diam.	Height
5G	5F	.500	.585
7G	7F	.700	.682
9G	9F	.900	.935
12G	12F	1.250	.750



5P

Part Number

	Diam.	Height
5P	.500	.430
7P	.700	.532
9P	.900	.731



5K

Part Number

	Diam.	Height
5K	.500	.585
7K	.700	.682
9K	.900	.935

3000 SERIES PUSH-ON KNOBS

Push-On Knobs



3440

Part Number

Without Line	With Line	Diam.	Height
3008	3440	.500	.625



3441

Part Number

Without Line	With Line	Diam.	Height
3009	3441	.850	.600



3442

Part Number

Without Line	With Line	Diam.	Height
3010	3442	.975	.750



3008



3009



3010

TRADITIONAL SERIES PUSH-ON KNOBS

Push-On Knobs

x= outer diameter
y= height



239
x=.52
y=.57



231
x=.53
y=.64



252
x=.70
y=.56



257
x=.95
y=.57



325
x=1.14
y=.64



258
x=1.14
y=.59



391
x=1.40
y=.60



326
x=1.52
y=.66

CORONADO SERIES CLAMP KNOBS

Push-On Knobs



E20
x=1.38
y=.75



E30
x=1.75
y=.88



E40
x=2.38
y=1.00

GEMINI SERIES PUSH-ON KNOBS

Push-On Knobs



471
x=.77
y=.48



475
x=1.03
y=.67



476
x=1.27
y=.77



473
x=2.02
y=.90

Push-On Knobs

x= outer diameter
y= height



551
x= .38
y= .88



537
x= .40
y= .68



691
x= .38
y= .88



691
x= .38
y= .88



691
x= .38
y= .88



691
x= .38
y= .88



4740
x= .38
y= .88



7510
x= .38
y= 1.03



6060
x= .46
y= .76



390
x= .45
y= .98



414
x= .45
y= 1.27



703
x= .50
y= .60



451
x= .52
y= .78



596
x= .71
y= .80



98
x= .88
y= .64



382
x= .89
y= .30



701
x= 1.00
y= .63



702
x= 1.01
y= .64



571
x= 1.06
y= .69



450
x= 1.08
y= .72



438
x= 1.12
y= .40



384
x= 1.51
y= .55



422
x= 1.77
y= .36



434
x= 1.77
y= 1.27



439
x= 2.34
y= .93

MATERIALS

Resins—much of the growth of the injection molding industry is due to the continuing ability of resin suppliers to offer new and improved engineering materials. Today resins can meet specifications for mechanical, thermal, electrical and impact demands increasingly competitive in performance to metal at reduced processing costs. EHC's participates in an ongoing evaluation process of new resins. Moldability, ease of processing and decoration are some of the analysis conducted. This process provides for a continuing effort to improve current production needs and prepare for future program demands.

- Good Mechanical Strength is of primary concern when choosing our materials. Where high mechanical strength is needed numerous reinforcements are used including glass fibers, mineral fillers, glass microspheres, all products that improve impact resistance.
- Electrical Resistance or Insulation make the use of EHC plastic products especially suited in electro-mechanical environments.

The plastic materials used in EHC parts have been carefully selected to meet the functional and aesthetic requirements of each product.

Thermoplastic—Materials with technical characteristics such as: ABS, nylon, TPR, polyamide, acetyl, polypropylene, polycarbonate, PPO and polyester resins. These materials are not always interchangeable.

MATERIAL SPECIFICATIONS

INSPECTION

Standard

Parts are considered commercially non-acceptable if an imperfection is visible when viewed at arm's length distance under normal lighting conditions. Parts will be viewed for a period not to exceed 3-5 seconds in daylight (or fluorescent light of approximately 70 foot candles) with the unaided eye at normal viewing distance of 24 inches, in the normal viewing plane.

Special

Jewelry-type inspection will be reflected in a higher unit-cost. Customer to provide EHC with written notice in advance of placement of order.

CHEMICAL RESISTANCE

Contact manufacturer for resistance factors prior to usage with chemicals.

Surface Finish

1. Gloss: Parts produced from a highly polished mold, or
2. Satin: Parts produced from a textured mold to remove glossiness,
- or
3. Textured: Parts produced from a pattern etched mold, or
4. Matte-finish: Parts produced from a secondary operation that provides a non-reflective plastic surface.

Appearance

Parts to be free of shrinkage in excess of .009" IN/IN on top surface and sides of molded knob, mold flow marks or "cold" spots, molding flash, chips or cracks, excessive gate marks and colors (for knob and skirt assemblies) to be consistent in shade and density for each order lot or release.

DECORATIVE INLAYS AND CAPS, FLAT ALUMINUM DIALS AND TAPERED ALUMINUM SKIRTS

Material: Aluminum

Surface Finish

1. Matte (frosted: Non-reflective surface appearance produced by mechanical brushing or chemical etching with clear anodized coating)
- or
2. Bright: Reflective surface appearance produced by mechanical or chemical means with clear anodized coating.

Inspection: See opening paragraph.

Appearance

Parts are to be free of scratches and blemishes. Colors to be consistent in shade and density for each order lot or release.

MARKINGS

Adhesion:

Markings cannot be removed from plastic surface by an adhesive material comparable to scotch tape.

Inspection: See opening paragraph.

Appearance:

All characters, lettering, border, and backgrounds must be complete and all lettering must be clear, visible, and legible. Colors to be consistent in shade and density for each order lot or release.

SET SCREWS

Hexagon Socket/Spline Socket/Slotted

1. Material: high grade alloy steel or stainless steel
2. Finish: Corrosion resistant/coating with clear, yellow or black finish
3. Hardness: Case hardened
4. Finish: Clear corrosion resistant coating
5. Point Style: Cup point

Location (nominal) of Screw(s) (if applicable)

1. One Screw
 - a) 180° from indicator
 - b) Adjacent to flat of shaft hole
2. Two screws: 90° and 180° from indicator

Thread

Class 3A

Screw Size, Length, Socket, Point, and Self Locking

Determined by manufacturer, or per customer request.

INSERTS

1. Material: Aluminum or half-hard brass alloy.
2. Finish: Commercial nickel plate on brass, and alodine on aluminum. Finish to be consistent and free of flaking.

Thread

Thread Fit: 2B gauge

SPRING CLIPS

Material: #1050C type spring steel

Hardness: Medium temper

Finish: Blue oil finish, or zinc phosphate

CHROME-PLATED PLASTIC (Thermoplastic only)

Processes

1. Electroplating, or
2. Vacuum metalizing

Surface Finish

1. Bright: High gloss reflective finish, or
2. Satin: Semi-gloss non-reflective finish

Adhesion:

Plating cannot be removed from plastic surface by an adhesive material comparable to scotch tape.

Appearance:

Parts to be plated over entire first surface area, consistent in shade and density for each order lot or release, free of first surface peeling, free of first surface flow marks and free of foreign matter under plated surface (e.g. dust)

PACKAGING

All products are packaged to insure that quality is not jeopardized during transit. Relative to the complexity of the part, product is:

- A. Individual bags, or
- B. Layer packaged on cardboard pads, or
- C. Bulk-packaged in cartons

PRODUCT DIMENSIONS: ± .015" unless otherwise specified.

PRODUCT CONCENTRICITY: .020" TIR

SHAFTHOLE DIAMETERS

- Round Shaft Hole: ± .002"
- Round Shaft Hole with Flat: ± .0035"
- Knurled Shaft Hole:
 - Solid Shaft: ± .002"
 - Split Shaft: ± .0035"

TORQUE SPECIFICATIONS

Torque is defined as the number of pounds required to strip molded-in inserts and stud heads from molded plastic part, flatten metal spring clip, strip serration of knurled plastic shaft hole or strip head of set screw.

Spring Diameter	Stripping Torque Inch Lbs.
.125	10
.187	17
6 mm	25
.250	25

Knurled Type Shaft Hole: All types 15 inch lbs.

Screw Size	Threads Per In.	Head Stripping Torque Inch Lbs.
#3	48	3-1/2
#4	40	4-3/4
#6	32	8-3/4
#8	32	18
#10	32	32

TENSION (push/pull specifications)

Tension is defined as the maximum number of pounds required to securely fit a press-fit knob onto the shaft and the minimum number of pounds required to remove the knob from the shaft.

- Plastic Shaft Hole*
 - Push: 15 lbs. Maximum
 - Pull: 4 lbs. Minimum
- Spring Clip Shaft Hole*
 - Push: 20 lbs. Maximum
 - Pull: 4 lbs. Minimum
- Knurled Type Shaft Hole*
 - Push 20 lbs. Maximum
 - Pull: 4 lbs. Minimum

Shaft hole fit per customer specifications can be provided for an additional charge. Sample shaft and tension requirements must be forwarded to manufacturer.

THREADED INSERTS

(Standard Series and Selected Combinations – Unified Screw Threads)

Thread Fit: 2B Gauge

Minor Diameter	Thread Type
	#6-32 UNC 2B
	#8-32 UNC 2B
	#10-32 UNF 2B
	1/4-20 UNC 2B
	5/16-18 UNC 2B
	3/8-16 UNC 2B
	1/2-13 UNC 2B
	5/8-11 UNC 2B

THREADED STUDS

(Standard Series and Selected Combinations – Unified Screw Threads)

Thread Fit: Class 2A

Length: ± .020"

SALES TERMS & AGREEMENTS

- TERMS:** Our terms of sale are 1/10 net 30 FOB Farmingdale, NY. Terms on tooling are 50% with order balance upon sample approval.
- RETURNS:** All returns must be approved by EHC and be assigned an EHC RMA number.
- QTY VARIANCE:** We reserve the right to over or under ship 10% on orders for non-standard parts.
- SHIPMENTS:** Usually UPS or FedEx prepaid and added, unless otherwise specified.
- DELIVERY:** Immediate and just-in-time delivery is available on most standard items.

SPECIFICATIONS FOR NON-STANDARD PRODUCTS MUST BE APPROVED BY EHC. SPECIFICATIONS WHICH CALL FOR CLOSER TOLERANCES, ENHANCED PHYSICAL PROPERTIES, OR MORE STRINGENT VISUAL REQUIREMENTS THAN THOSE PREVIOUSLY LISTED MUST HAVE SPECIFIC APPROVAL OF EHC'S SALES AND MANUFACTURING ORGANIZATIONS.

NOTE: SHRINKAGE, TOOLMAKERS VARIATIONS FROM CAVITY TO CAVITY, LIFE-CYCLE OF TOOLING, MATERIALS FROM MULTIPLE VENDORS, HUMIDITY, ETC. ALL HAVE AN EFFECT ON THE NORMAL DIMENSIONS OF PLASTIC PARTS. A PREMIUM CHARGE WILL BE ADDED TO THE UNIT-COST FOR THOSE CUSTOMERS REQUIRING EXACT TOLERANCES AND APPEARANCE. CONTACT MANUFACTURER FOR ADDITIONAL CHARGES.

STORAGE OF CUSTOMER OWNED ARTWORK PREPARATION, RAW MATERIALS AND SUPPLIES, AND TOOLING.

CUSTOMER SHALL NOTIFY EHC OF DISCONTINUANCE OF PRODUCT FOR WHICH CUSTOMER HAS PURCHASED ITEMS SO THAT ARRANGEMENTS CAN BE MADE TO RETURN OR DISCARD THEM. OUR STANDARD PRACTICE ASSUMES THAT ITEMS NOT USED BY THE CUSTOMER FOR A PERIOD OF TWO YEARS WILL BE CONSIDERED OF NO VALUE AND CUSTOMER WILL BE NOTIFIED OF OUR DECISION. FAILURE OF CUSTOMER TO RESPOND TO INQUIRY LEAVES DISBURSEMENT OF ITEMS AT THE DISCRETION OF EHC (AT NO CHARGE OR OBLIGATION).

